

APPROVED FOR CONSTRUCTION

BY: \_\_\_\_\_ DATE: \_\_\_\_\_  
CITY OF DUPONT

THESE DRAWINGS ARE APPROVED FOR CONSTRUCTION FOR A PERIOD OF 12 MONTHS FROM THE DATE SHOWN HEREON. THE CITY RESERVES THE RIGHT TO MAKE REVISIONS, ADDITIONS, DELETIONS, OR MODIFICATIONS SHOULD CONSTRUCTION BE DELAYED BEYOND THIS TIME LIMITATION. THE CITY, BY APPROVING THESE DRAWINGS, ASSUMES NO LIABILITY IN REGARDS TO THEIR ACCURACY OR OMISSIONS.

Revision

By

Appr.

Ctd.

Date

No.

Title

PRELIMINARY COVER SHEET  
FOR  
DUPONT BUSINESS PARK

AVENUE 55, LLC  
601 UNION STREET, SUITE 2930  
SEATTLE, WA 98101  
(206) 707-9696

For:



12/13/2024

Scale: Horizontal 1"=50' Vertical N/A

Designed JAT Draw JAT Checked DKB Approved DKB Date 12/13/24

Job Number 18666 Sheet 8 of 8

Job Number 18666

Sheet 8

18666

18666

18666

18666

18666

18666

18666

18666

18666

18666

18666

18666

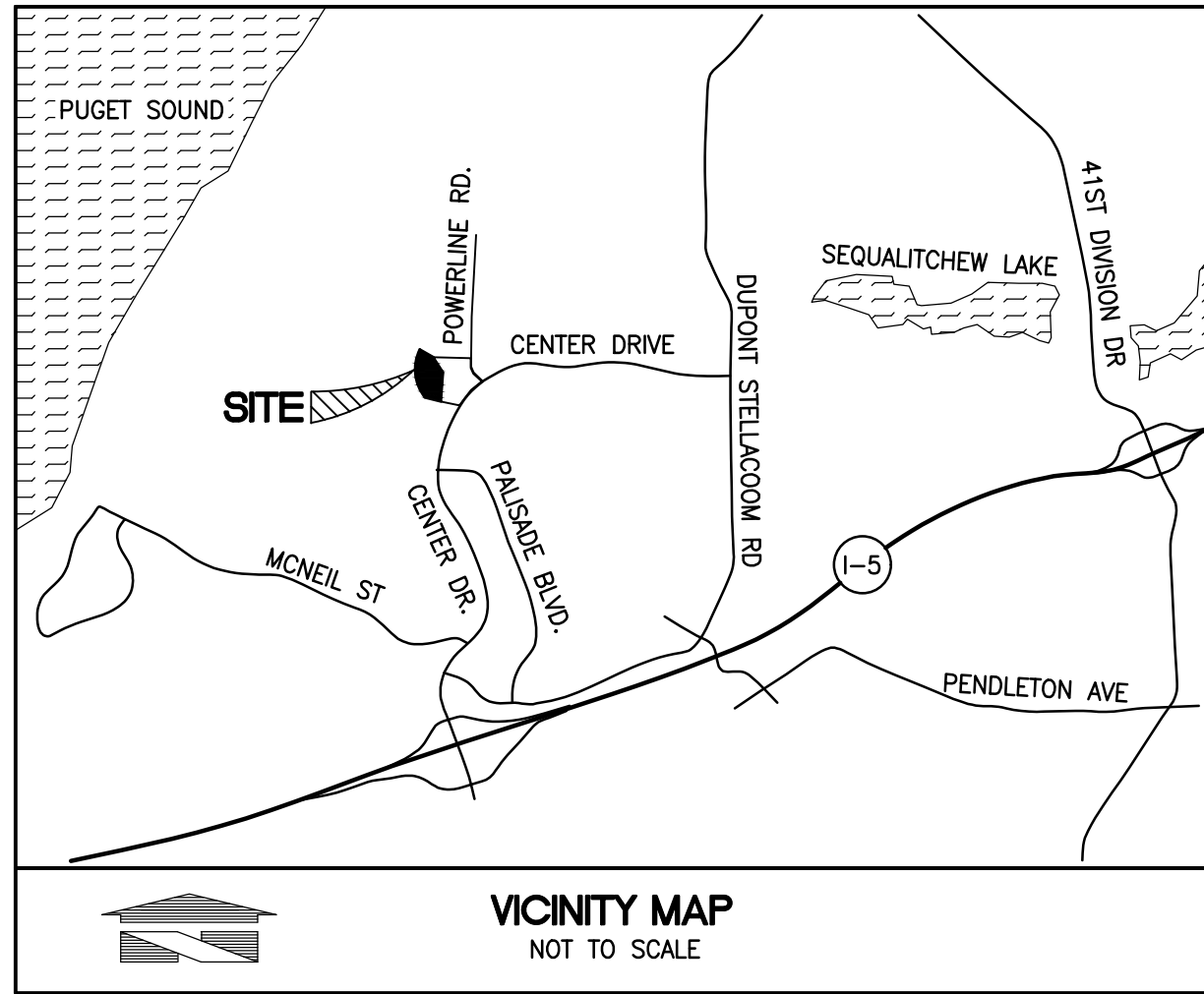
18666

# PRELIMINARY COVER SHEET

FOR

## DUPONT BUSINESS PARK

A PORTION OF THE NW 1/4 OF SECTION 26,  
TOWNSHIP 19N, RANGE 01E, W.M.  
CITY OF DUPONT, PIERCE COUNTY, WASHINGTON



SITE ADDRESS  
1700 CENTER DRIVE DUPONT, WA 98327

PARCEL NUMBER  
0119266007

PARCEL LEGAL DESCRIPTION:

LOT 3, CITY OF DUPONT SHORT PLAT NO. PLNG2020-017, RECORDED UNDER RECORDING NUMBER 202203015001, RECORDS OF PIERCE COUNTY, WASHINGTON.

DATES OF SURVEYS

THIS SURVEY REPRESENTS VISIBLE PHYSICAL IMPROVEMENT CONDITIONS EXISTING ON DECEMBER 13, 2023. SURVEY CONTROL IS BASED ON THAT DEPICTED ON CITY OF DUPONT SHORT PLAT PLNG2020-017, REC. NO.

HORIZONTAL DATUM - BASIS OF BEARINGS

NORTH LINE OF THE NORTHWEST QUARTER OF SECTION 26, T.19N, R.1E, W.M. BEING SOUTH 88° 35' 59" EAST.

VERTICAL DATUM - NGVD29

PROJECT BENCHMARK  
WSDOT MONUMENT DESIGNATION 5552 APPROXIMATELY 300' EAST OF THE SOUTHWEST CORNER OF SITE. NGVD29 ELEVATION WAS DERIVED BY CONVERTING PUBLISHED WSDOT NAVD88 ELEVATION USING CORPSCON SOFTWARE. (NAVD88= NGVD+3.44')  
NGVD29 ELEV. = 259.173 FEET

CONSTRUCTION SEQUENCE

1. INSTALL FILTER FABRIC AND N.G.P.E. FENCE WHERE INDICATED.
2. IDENTIFY LIMITS OF CLEARING.
3. INSTALL ROCK-LINED CONSTRUCTION ENTRANCE.
4. CLEAR TO LIMITS SHOWN ON DRAWINGS.
5. ROUGH GRADE ROADWAY AS DESIGNED AND INSTALL INTERCEPTOR DITCHES.
6. INSTALL SEDIMENT TRAPS AND PONDS.
7. INSTALL SANITARY SEWER SYSTEM.
8. INSTALL DOMESTIC WATER SYSTEM.
9. INSTALL STORM DRAINAGE SYSTEM.

UTILITY CONFLICT NOTE:

THE CONTRACTOR SHALL BE RESPONSIBLE FOR VERIFYING THE LOCATION, DIMENSION, AND DEPTH OF ALL EXISTING UTILITIES WHETHER SHOWN ON THESE PLANS OR NOT BY POT-HOLING THE UTILITIES AND SURVEYING THE HORIZONTAL AND VERTICAL LOCATION PRIOR TO CONSTRUCTION. THIS SHALL INCLUDE CALLING UTILITY LOCATE @ 811 AND THEN POT-HOLING ALL OF THE EXISTING UTILITIES AT LOCATIONS OF NEW UTILITY CROSSINGS TO PHYSICALLY VERIFY WHETHER OR NOT CONFLICTS EXIST. LOCATIONS OF SAID UTILITIES AS SHOWN ON THESE PLANS ARE BASED UPON THE UNVERIFIED PUBLIC INFORMATION AND ARE SUBJECT TO VARIATION. IF CONFLICTS SHOULD OCCUR, THE CONTRACTOR SHALL CONSULT BARGHAUSEN CONSULTING ENGINEERS, INC. TO RESOLVE ALL PROBLEMS PRIOR TO PROCEEDING WITH CONSTRUCTION.

CONTRACTOR SHALL BE FULLY RESPONSIBLE FOR OBTAINING PERMITS FROM THE WASHINGTON STATE DEPARTMENT OF NATURAL RESOURCES FOR REMOVING AND REPLACING ALL SURVEY MONUMENTATION THAT MAY BE AFFECTED BY CONSTRUCTION ACTIVITY, PURSUANT TO WAC 332-120. APPLICATIONS MUST BE COMPLETED BY A REGISTERED LAND SURVEYOR. APPLICATIONS FOR PERMITS TO REMOVE MONUMENTS MAY BE OBTAINED FROM THE WASHINGTON STATE DEPARTMENT OF NATURAL RESOURCES, OR BY CONTACTING THEIR OFFICE BY TELEPHONE AT (206) 902-1190.

WASHINGTON STATE DEPARTMENT OF NATURAL RESOURCES PUBLIC LAND SURVEY OFFICE  
1111 WASHINGTON STREET S.E. P.O. BOX 47060  
OLYMPIA, WASHINGTON 98504-7060

UPON COMPLETION OF CONSTRUCTION, ALL MONUMENTS DISPLACED, REMOVED, OR DESTROYED SHALL BE REPLACED BY A REGISTERED LAND SURVEYOR, AT THE COST AND AT THE DIRECTION OF THE CONTRACTOR, PURSUANT TO THESE REGULATIONS. THE APPROPRIATE FORMS FOR REPLACEMENT OF SAID MONUMENTATION SHALL ALSO BE THE RESPONSIBILITY OF THE CONTRACTOR.



Know what's below.  
Call before you dig.

### PROJECT INFORMATION

PROJECT AREA = 5.64 ACRES

TOTAL IMPERVIOUS AREA = 4.40 ACRES

LANDSCAPING AREA = 1.24 ACRES

### ENGINEER/SURVEYOR

BARGHAUSEN CONSULTING ENGINEERS, INC.  
18215 72ND AVENUE SOUTH  
KENT, WA 98032  
PHONE: (425) 251-6222  
FAX: (425) 251-8782  
CONTACT: DAN BALMELLI, P.E.

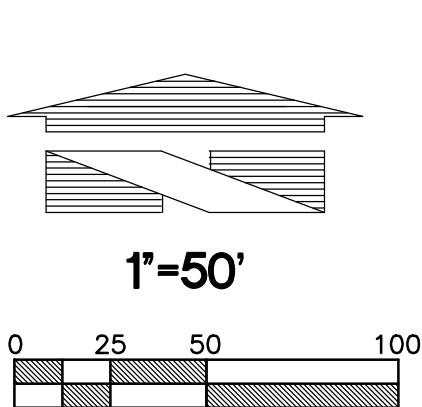
### ARCHITECT

INNOVA ARCHITECTS  
950 PACIFIC AVENUE, SUITE 450  
TACOMA, WA 98402  
PHONE: (253) 572-4903  
CONTACT: BRIAN LUDWIG

### INDEX TO SHEETS:

- |         |   |         |                                 |
|---------|---|---------|---------------------------------|
| C1 OF 8 | PRELIMINARY COVER SHEET                     | L1 OF 9 | PRELIMINARY TREE RETENTION PLAN |
| C2 OF 8 | PRELIMINARY TESC AND DEMOLITION PLAN        | L2 OF 9 | PRELIMINARY LANDSCAPE PLAN      |
| C3 OF 8 | PRELIMINARY TESC NOTES AND DETAILS          | L3 OF 9 | PRELIMINARY LANDSCAPE PLAN      |
| C4 OF 8 | PRELIMINARY GRADING AND STORM DRAINAGE PLAN | L4 OF 9 | PLANT SCHEDULE                  |
| C5 OF 8 | PRELIMINARY WATER AND SEWER PLAN            | L5 OF 9 | LANDSCAPE NOTES AND DETAILS     |
| C6 OF 8 | PRELIMINARY CONSTRUCTION NOTES AND DETAILS  | L6 OF 9 | PRELIMINARY IRRIGATION PLAN     |
| C7 OF 8 | PRELIMINARY CONSTRUCTION NOTES AND DETAILS  | L7 OF 9 | IRRIGATION NOTES AND DETAILS    |
| C8 OF 8 | PRELIMINARY CONSTRUCTION NOTES AND DETAILS  | L8 OF 9 | IRRIGATION DETAILS              |
|         |   | L9 OF 9 | IRRIGATION DETAILS              |

LEGEND:	
SURVEY MONUMENT	PROPOSED TYPE II CATCH BASIN
EX. POWER VAULT	PROPOSED TYPE I CATCH BASIN
EX. LUMINAIRE (LUM.)	PROPOSED STORM DRAIN FLOW ARROW
EX. LOT LIGHT	PROPOSED STORM DRAINAGE LINE
EX. POWER POLE	PROPOSED TRENCH DRAIN
EX. JUNCTION BOX	PROPOSED SANITARY SEWER LINE
EX. CATCH BASIN (CB)	PROPOSED SANITARY SEWER CLEANOUT
EX. CATCH BASIN (CB) TYPE 2	PROPOSED WATERMAIN
EX. SANITARY SEWER MANHOLE (SSMH)	PROPOSED FIRE HYDRANT
EX. GAS METER	PROPOSED WATER VALVE
EX. GAS VALVE	PROPOSED CONCRETE BLOCKING
EX. WATER VALVE (WV)	PROPOSED 90° BEND
EX. FIRE HYDRANT (FH)	PROPOSED SPOT ELEVATIONS
MAIL BOX	MATCH EXISTING ELEVATION
EX. WATER METER	TOP OF WALL ELEVATION
EX. SIGN	MATCH EXISTING ELEVATION
EX. WATER LINE	MATCH EXISTING ELEVATION
EX. SANITARY SEWER LINE	MATCH EXISTING ELEVATION
EX. STORM DRAINAGE LINE	MATCH EXISTING ELEVATION
EX. POWER UNDERGROUND	PROPOSED CONTOURS
EX. POWER OVERHEAD	PROPOSED PAVEMENT
EX. METAL FENCE	PROPOSED CONCRETE
EX. WOOD FENCE	
EXISTING SPOT ELEVATIONS	
EXISTING CONTOURS	



Received 12-27-2024

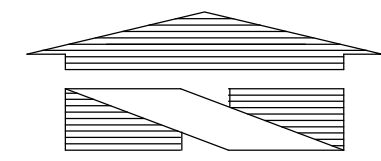


PRELIMINARY TESC AND DEMOLITION PLAN

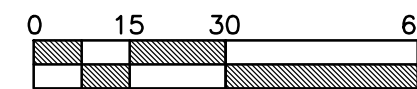
FOR

DUPONT BUSINESS PARK

A PORTION OF THE NW 1/4 OF SECTION 26,  
TOWNSHIP 19N, RANGE 01E, W.M.  
CITY OF DUPONT, PIERCE COUNTY, WASHINGTON



1"=30'



APPROVED FOR CONSTRUCTION

BY: CITY OF DUPONT DATE:

THESE DRAWINGS ARE APPROVED FOR CONSTRUCTION FOR A PERIOD OF 12 MONTHS FROM THE DATE SHOWN HEREON. THE CITY RESERVES THE RIGHT TO MAKE REVISIONS, ADDITIONS, DELETIONS, OR MODIFICATIONS SHOULD CONSTRUCTION BE DELAYED BEYOND THIS TIME LIMITATION. THE CITY, BY APPROVING THESE DRAWINGS, ASSUMES NO LIABILITY IN REGARDS TO THEIR ACCURACY OR OMISSIONS.

Revision

Appr.

By

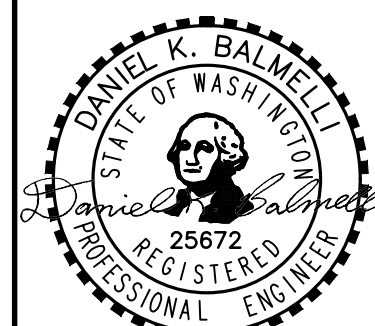
Date

No.

PRELIMINARY  
TESC AND DEMOLITION PLAN  
FOR  
DUPONT BUSINESS PARK

AVENUE 55, LLC  
601 UNION STREET, SUITE 2930  
SEATTLE, WA 98101  
(206) 707-9696

For:



Scale:

Horizontal

1"=30'

Vertical

N/A

Designed

JAT

Drawn

JAT

Checked

DKB

Approved

DKB

Date

12/13/24

Scale

1"=30'

Scale

1"=30'

Scale

1"=30'

Scale

1"=30'

Scale

1"=30'

Scale

1"=30'

Scale

1"=30'

Scale

1"=30'

Scale

1"=30'

Scale

1"=30'

Scale

1"=30'

Job Number

18666

Sheet

C2

8

of

18666

Job Number

18666

Sheet

C2

8

of

18666

Job Number

18666

Sheet

C2

8

of

18666

Job Number

18666

Sheet

C2

8

of

18666

Job Number

18666

Sheet

C2

8

of

18666

Job Number

18666

Sheet

C2

8

of

18666

Job Number

18666

Sheet

C2

8

of

18666

Job Number

18666

Sheet

C2

8

of

18666

Job Number

18666

Sheet

C2

8

of

18666

Job Number

18666

Sheet

C2

8

of

18666

Job Number

18666

Sheet

C2

8

of

18666

Job Number

18666

Sheet

C2

8

of

18666

Job Number

18666

Sheet

C2

8

of

18666

Job Number

18666

Sheet

C2

8

of

18666

Job Number

18666

Sheet

C2

8

of

18666

Job Number

18666

Sheet

C2

8

of

18666

Job Number

18666

Sheet

C2

8

of

18666

Job Number

18666

Sheet

C2

8

of

18666

Job Number

18666

Sheet

C2

8

of

18666

Job Number

18666

Sheet

C2

8

of

18666

Job Number

18666

Sheet

C2

8

of

18666

Job Number

18666

Sheet

C2

8

of

18666

Job Number

18666

Sheet

C2

8

of

18666

Job Number

18666

Sheet

C2

8

of

18666

Job Number

18666

Sheet

C2

8

of

18666

Job Number

18666

Sheet

C2

8

of

18666

Job Number

18666

Sheet

C2

8

of

18666

Job Number

18666

Sheet

C2

8

of

18666

Job Number

18666

Sheet

C2

8

of

18666

Job Number

18666

Sheet

C2

8

of

18666

Job Number

18666

Sheet

C2

8

of

18666

Job Number

18666

Sheet

C2

8

of

18666

Job Number

18666

Sheet

C2

8

of

18666

Job Number

18666

Sheet

C2

8

of

18666

Job Number

18666

Sheet

C2

8

of

18666

Job Number

18666

Sheet

C2

8

of

18666

Job Number

18666

Sheet

C2

8

of

18666

Job Number

18666

Sheet

C2

8

of

18666

Job Number

18666

Sheet

C2

8

of

18666

Job Number

18666

Sheet

C2

8

of

18666

Job Number

18666

Sheet

C2

8

of



FOR  
DUPONT BUSINESS PARK

**APPROVED FOR CONSTRUCTION**

BY: \_\_\_\_\_  
CITY OF DUPONT

THESE DRAWINGS ARE APPROVED FOR CONSTRUCTION FOR A PERIOD OF 12 MONTHS FROM THE DATE SHOWN HEREON. THE CITY RESERVES THE RIGHT TO MAKE REVISIONS, ADDITIONS, DELETIONS, OR MODIFICATIONS SHOULD CONSTRUCTION BE DELAYED BEYOND THIS TIME LIMITATION. THE CITY, BY APPROVING THESE DRAWINGS, ASSUMES NO LIABILITY IN REGARDS TO THEIR ACCURACY OR OMISSIONS.

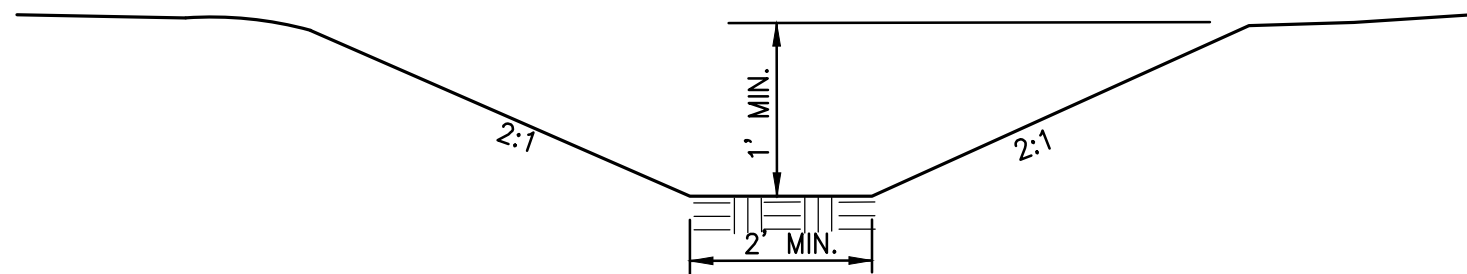
THE CONTRACTOR SHALL PROVIDE EROSION CONTROL METHODS ACCORDING TO THE WASHINGTON STATE DEPARTMENT OF ECOLOGY'S (WDOE) "STORMWATER MANAGEMENT MANUAL FOR WESTERN WASHINGTON." THE FOLLOWING NOTES ARE ONLY A FEW OF THE MINIMUM REQUIREMENTS AND SHOULD NOT BE INTERPRETED TO EXCLUDE ANY EROSION CONTROL PRACTICES AS SPECIFIED IN THE WDOE STORMWATER MANUAL.

1. ALL LIMITS OF CLEARING AND AREAS OF VEGETATION PRESERVATION AS PRESCRIBED ON THE PLAN SHALL BE CLEARLY FLAGGED BY THE ENGINEER IN THE FIELD AND OBSERVED DURING CONSTRUCTION.
2. ALL REQUIRED SEDIMENTATION/EROSION CONTROL FACILITIES MUST BE IN OPERATION PRIOR TO LAND CLEARING AND/OR OTHER CONSTRUCTION TO INSURE THAT SEDIMENT LADEN WATER DOES NOT ENTER THE NATURAL DRAINAGE SYSTEM. ALL EROSION AND SEDIMENT FACILITIES SHALL BE MAINTAINED IN A SATISFACTORY CONDITION UNTIL SUCH TIME THAT CLEARING AND/OR CONSTRUCTION IS COMPLETED AND POTENTIAL FOR ON-SITE EROSION HAS PASSED. THE IMPLEMENTATION, MAINTENANCE, REPLACEMENT AND ADDITIONS TO EROSION/SEDIMENTATION CONTROL SYSTEMS SHALL BE THE RESPONSIBILITY OF THE CONTRACTOR.
3. THE EROSION AND SEDIMENTATION CONTROL SYSTEMS DEPICTED ON THIS DRAWING ARE INTENDED TO BE MINIMUM REQUIREMENTS TO MEET ANTICIPATED SITE CONDITIONS, AS CONSTRUCTION PROGRESSES AND AS UNEXPECTED OR SEASONAL CONDITIONS DICTATE, THE CONTRACTOR SHOULD ANTICIPATE THAT MORE EROSION AND SEDIMENTATION CONTROL FACILITIES WILL BE NECESSARY TO INSURE COMPLETE SUSTAINED CONTROL ON THE PROPOSED SITE. DURING THE COURSE OF CONSTRUCTION, IT WILL BE THE OBJECTIVE RESPONSIBILITY OF THE CONTRACTOR TO ADDRESS ANY NEW CONDITIONS THAT MAY BE CREATED BY HIS ACTIVITIES AND TO PROVIDE ADDITIONAL FACILITIES, OVER AND ABOVE MINIMUM REQUIREMENTS, AS MAY BE NEEDED TO PROTECT ADJACENT PROPERTIES AND WATER QUALITY OF THE RECEIVING DRAINAGE SYSTEM.
4. AT NO TIME SHALL MORE THAN ONE FOOT OF SEDIMENT BE ALLOWED TO ACCUMULATE WITHIN A CATCH BASIN. THE CONTRACTOR SHALL BE RESPONSIBLE FOR REMOVING AND DISPOSING OF THE SEDIMENT. ALL CATCH BASINS, CONVEYANCE LINES AND DITCHES ALONG [STREET NAMES] SHALL BE CLEANED PRIOR TO PAVING.
5. THE CONTRACTOR SHALL REMOVE MATERIAL DROPPED, WASHED OR TRACKED FROM VEHICLES ONTO THE CITY RIGHT-OF-WAY OR INTO THE STORM DRAINAGE SYSTEM ON [STREET NAMES]. DEBRIS SHALL NOT BE WASHED INTO THE STORM DRAINAGE SYSTEM.
6. EROSION AND SEDIMENT CONTROL FACILITIES SHALL BE INSPECTED WEEKLY AND MAINTAINED UNTIL 24 HOURS FOLLOWING A STORM EVENT. SEDIMENT SHALL BE REMOVED TO ENSURE THE FACILITIES WILL FUNCTION PROPERLY. THE FACILITIES SHALL BE SATISFACTORILY MAINTAINED UNTIL CONSTRUCTION IS COMPLETED AND THE POTENTIAL FOR ON-SITE EROSION HAS PASSED.
7. ALL STORM DRAIN INLETS MADE OPERABLE DURING CONSTRUCTION SHALL BE PROTECTED SO THAT STORMWATER RUNOFF SHALL NOT ENTER ANY CONVEYANCE SYSTEM WITHOUT FIRST BEING FILTERED OR OTHERWISE TREATED TO REMOVE SEDIMENT.
8. NO DISTURBED SOIL SHALL REMAIN UNSTABILIZED FOR MORE THAN TWO DAYS.
9. SEDIMENT TRAP/POND Baffles SHALL BE EMBEDDED IN SIDE SLOPES.

CONTRACTOR SHALL PROVIDE INLET PROTECTION FOR ALL CATCH BASINS WITHIN CONSTRUCTION ZONE.

- SCHEDULE AND LIMIT REMOVAL OF EXISTING VEGETATION AND GROUND COVER TO THE MINIMUM EXTENT FEASIBLE WITHIN ACTIVE WORK AREA.

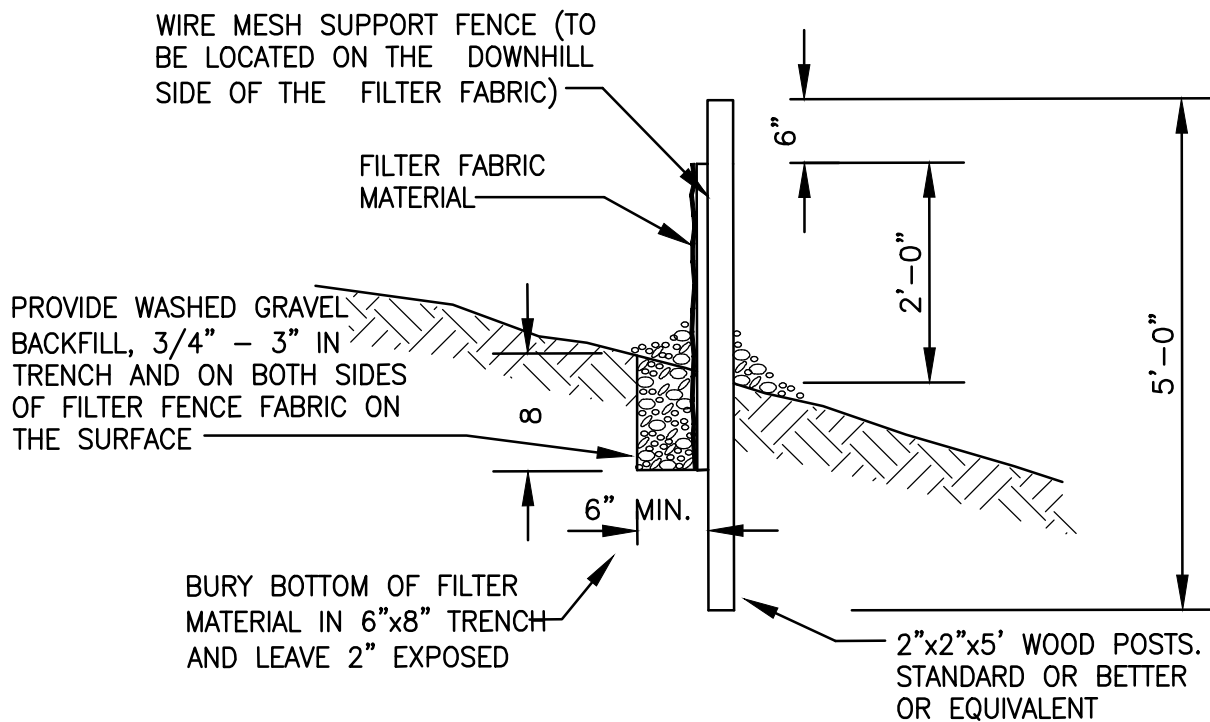
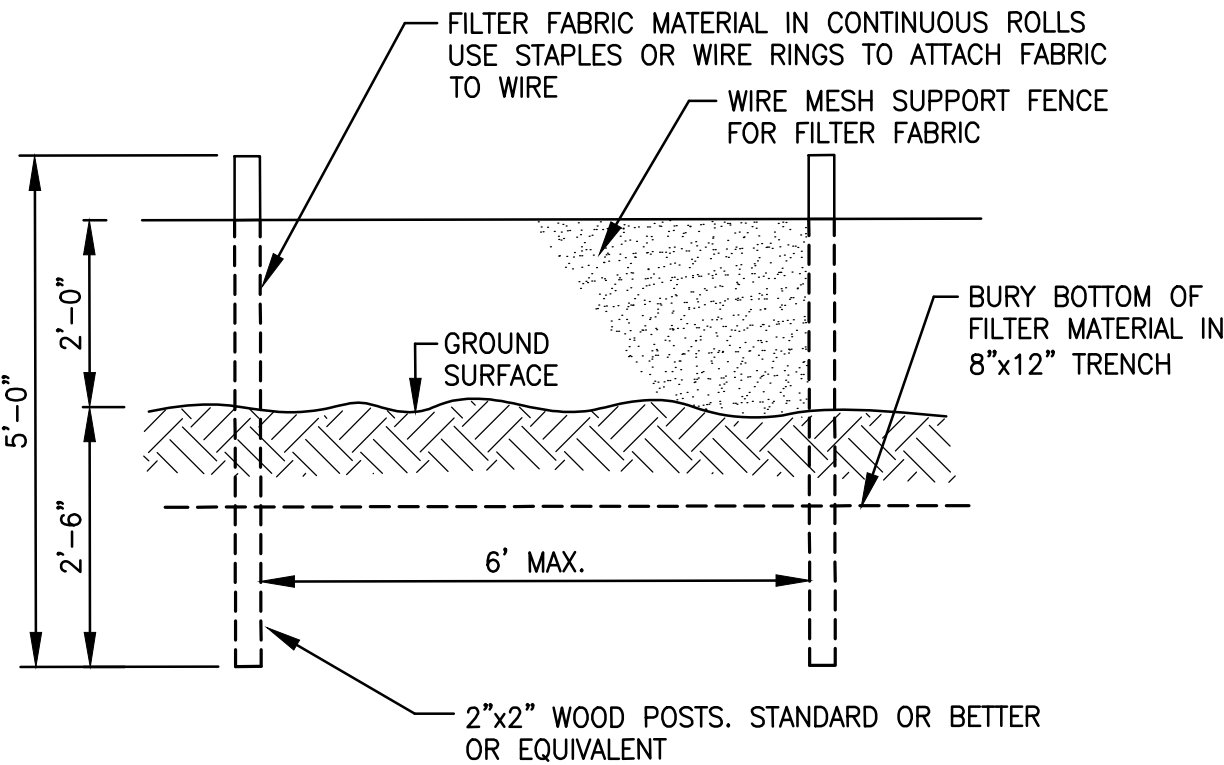
- ALL TOPSOIL (IF FOUND) SHALL REMAIN ON-SITE AND BE UTILIZED FOR SITE RESTORATION FOLLOWING COMPLETION OF GRADING ACTIVITIES.
- GEOTECHNICAL ENGINEER SHALL BE ON-SITE DURING ALL STRIPPING AND GRUBBING OPERATIONS TO VERIFY CONDITION OF SUBGRADE AND REMOVAL OF ALL ORGANIC MATERIAL, STUMPS, UNCONTROLLED FILL, ETC.
- GEOTECHNICAL ENGINEER SHALL OBSERVE AND TEST FILL MATERIAL AS REQUIRED TO CERTIFY THE COMPLETED FILLS.



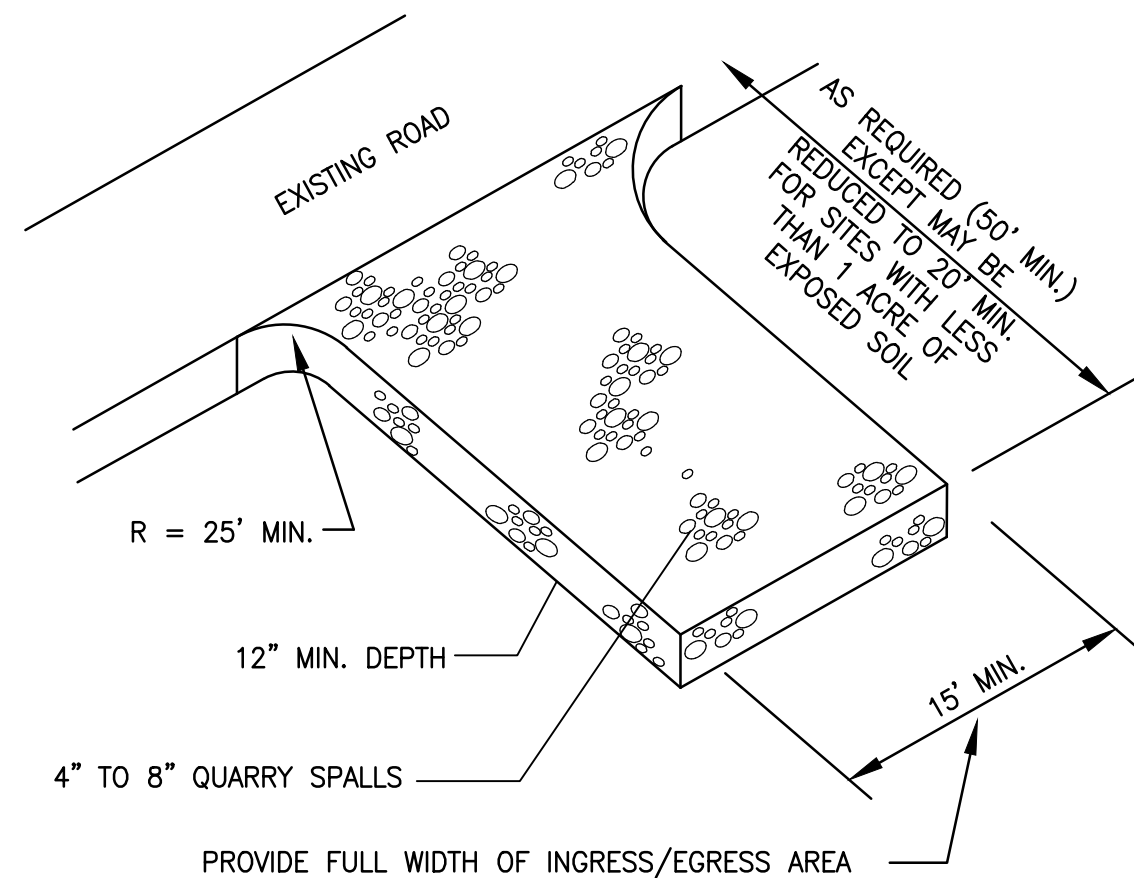
NOT TO SCALE

1. SEED AND MULCH SHALL BE APPLIED WITHIN 5 DAYS OF DIKE CONSTRUCTION (SEE VEGETATION).
2. THE UPSLOPE SIDE OF THE DIKE SHALL PROVIDE POSITIVE DRAINAGE TO THE DIKE OUTLET.
3. NO EROSION SHALL OCCUR AT THE DIKE OUTLET. PROVIDE ENERGY DISSIPATION MEASURES AS NECESSARY.
4. SEDIMENT LADEN RUNOFF MUST BE RELEASED THROUGH A SEDIMENT TRAPPING FACILITY SUCH AS A POND, TRAP, OR SILT FENCE AS APPROPRIATE TO DRAINAGE AREA SIZE.

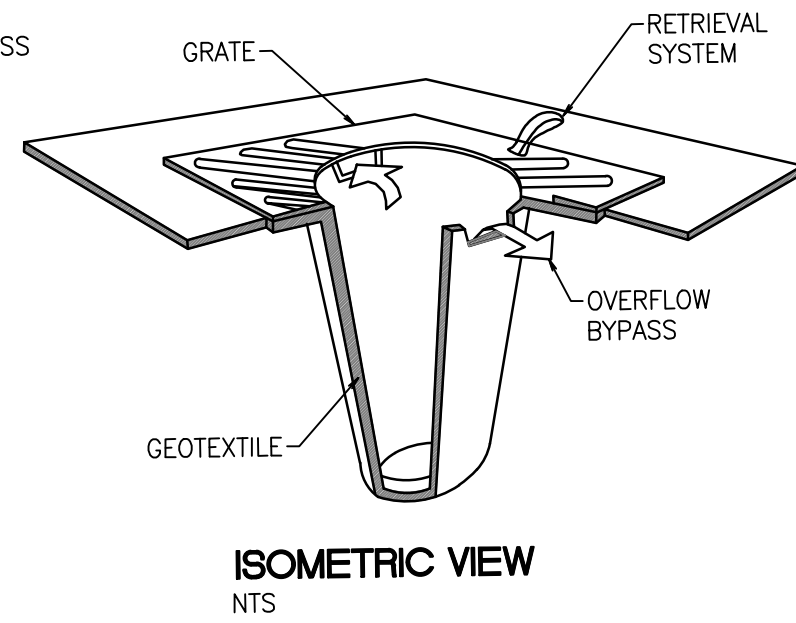
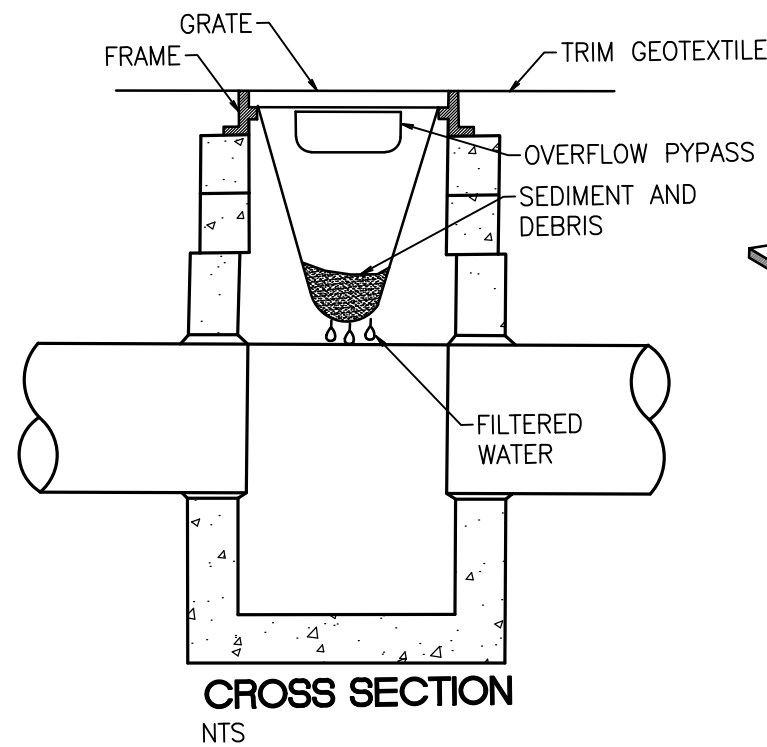
1. MULCH MATERIALS USED SHALL BE HAY OR STRAW, AND SHALL BE APPLIED AT THE RATE OF 1 BALE PER 200 S.F.
2. MULCHES SHALL BE APPLIED IN ALL AREAS WITH EXPOSED SLOPES GREATER THAN 2:1.
3. MULCHING SHALL BE USED IMMEDIATELY AFTER SEEDING OR IN AREAS WHICH CANNOT BE SEEDDED BECAUSE OF THE SEASON.
4. ALL AREAS NEEDING MULCH SHALL BE COVERED BY NOVEMBER 1.



1. FILTER FABRIC SHALL BE PURCHASED IN A CONTINUOUS ROLL AND CUT TO THE LENGTH OF THE BARRIER TO AVOID USE OF JOINTS. WHEN JOINTS ARE NECESSARY, FILTER CLOTH SHALL BE SPLICED TOGETHER ONLY AT A SUPPORT POST, WITH A MINIMUM 6-INCH OVERLAP, AND SECURELY FASTENED AT BOTH ENDS TO POSTS.
2. POSTS SHALL BE SPACED A MAXIMUM OF 6 FEET APART AND DRIVEN SECURELY INTO THE GROUND (MINIMUM OF 30 INCHES).
3. A TRENCH SHALL BE EXCAVATED APPROXIMATELY 6 INCHES WIDE AND 8 INCHES DEEP ALONG THE LINE OF POSTS AND UPSLOPE FROM THE BARRIER. THIS TRENCH SHALL BE BACKFILLED WITH WASHED GRAVEL.
4. WHEN STANDARD STRENGTH FILTER FABRIC IS USED, A WIRE MESH SUPPORT FENCE SHALL BE FASTENED SECURELY TO THE UPSLOPE SIDE OF THE POSTS USING HEAVY-DUTY WIRE STAPLES AT LEAST 1 INCH LONG, TIE WIRES OR HOG RINGS. THE WIRE SHALL EXTEND INTO THE TRENCH A MINIMUM OF 4 INCHES AND SHALL NOT EXTEND MORE THAN 24 INCHES ABOVE THE ORIGINAL GROUND SURFACE.
5. THE STANDARD STRENGTH FILTER FABRIC SHALL BE STAPLED OR WIRED TO THE FENCE, AND 20 INCHES OF THE FABRIC SHALL BE EXTENDED INTO THE TRENCH. THE FABRIC SHALL NOT EXTEND MORE THAN 24 INCHES ABOVE THE ORIGINAL GROUND SURFACE. FILTER FABRIC SHALL NOT BE STAPLED TO EXISTING TREES.
6. WHEN EXTRA-STRENGTH FILTER FABRIC AND CLOSER POST SPACING IS USED, THE WIRE MESH SUPPORT FENCE MAY BE ELIMINATED. IN SUCH A CASE, THE FILTER FABRIC IS STAPLED OR WIRED DIRECTLY TO THE POSTS WITH ALL OTHER PROVISIONS OF ABOVE NOTES APPLYING.
7. FILTER FABRIC FENCES SHALL NOT BE REMOVED BEFORE THE UPSLOPE AREA HAS BEEN PERMANENTLY STABILIZED.
8. FILTER FABRIC FENCES SHALL BE INSPECTED IMMEDIATELY AFTER EACH RAINFALL AND AT LEAST DAILY DURING PROLONGED RAINFALL. ANY REQUIRED REPAIRS SHALL BE MADE IMMEDIATELY.
9. SILT FENCES WILL BE INSTALLED PARALLEL TO ANY SLOPE CONTOURS.
10. CONTRIBUTING LENGTH TO FENCE WILL NOT BE GREATER THAN 100 FEET.
11. DO NOT INSTALL BELOW AN OUTLET PIPE OR WEIR.
12. INSTALL DOWNSLOPE OF EXPOSED AREAS.
13. DO NOT DRIVE OVER OR FILL OVER SILT FENCES.



1. MATERIAL SHALL BE 4-INCH TO 8-INCH QUARRY SPALLS AND MAY BE TOP-DRESSED WITH 1-INCH TO 3-INCH ROCK. (STATE STANDARD SPECIFICATIONS, SECTION 8-15.)
2. THE ROCK PAD SHALL BE AT LEAST 12 INCHES THICK AND 50 FEET LONG (20 FEET FOR SITES WITH LESS THAN 1 ACRE OF DISTURBED SOIL). WIDTH SHALL BE THE FULL WIDTH OF THE VEHICLE INGRESS AND EGRESS AREA.
3. ADDITIONAL ROCK SHALL BE ADDED PERIODICALLY TO MAINTAIN PROPER FUNCTION OF THE PAD.
4. IF THE PAD DOES NOT ADEQUATELY REMOVE THE MUD FROM THE VEHICLE WHEELS, THE WHEELS SHALL BE HOSED OFF BEFORE THE VEHICLE ENTERS A PAVED STREET. THE WASHING SHALL BE DONE ON AN AREA COVERED WITH CRUSHED ROCK AND WASH WATER SHALL DRAIN TO A SEDIMENT RETENTION FACILITY OR THROUGH A SILT FENCE.





## STORM DRAIN INLET PROTECTION

NOT TO SCALE

NOTES:

1. SIZE THE BELOW GRATE INLET DEVICE(BGID) FOR THE STORM WATER STRUCTURE.
2. THE BGID SHALL HAVE A BUILT-IN HIGH-FLOW RELIEF SYSTEM(OVERFLOW BYPASS)
3. THE RETRIEVAL SYSTEM MUST ALLOW REMOVAL OF THE BGID WITHOUT SPILLING THE COLLECTED MATERIAL.

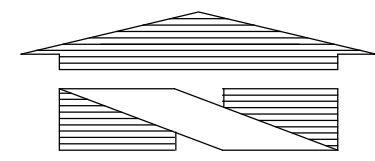
Job Number <b>18666</b>		<div></div> <div><b>Barghausen Consulting Engineers, LLC.</b> 18215 72nd Avenue South Kent, WA 98032 425.251.6222    <b>barghausen.com</b></div>		Designed <u>JAT</u> Drawn <u>JAT</u> Checked <u>DKB</u> Approved <u>DKB</u> Date <u>12/13/24</u>		Scale: Horizontal 1"=40' Vertical N/A		12/13/2024		<div></div>		For: <div>AVENUE 55, LLC 601 UNION STREET, SUITE 2930 SEATTLE, WA 98101 (206) 707-9696</div>		Title: <div>PRELIMINARY TESC NOTES AND DETAILS FOR DUPONT BUSINESS PARK</div>		No.    Date    By    Ctd.    Appr.    Revision	
Sheet C3 of 8																	



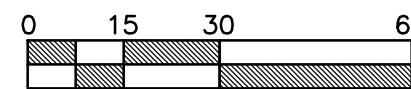
PRELIMINARY GRADING AND STORM DRAINAGE PLAN

FOR  
DUPONT BUSINESS PARK

A PORTION OF THE NW 1/4 OF SECTION 26,  
TOWNSHIP 19N, RANGE 01E, W.M.  
CITY OF DUPONT, PIERCE COUNTY, WASHINGTON



1"=30'



APPROVED FOR CONSTRUCTION

BY: CITY OF DUPONT DATE:

THESE DRAWINGS ARE APPROVED FOR CONSTRUCTION FOR A PERIOD OF 12 MONTHS FROM THE DATE SHOWN HEREON. THE CITY RESERVES THE RIGHT TO MAKE REVISIONS, ADDITIONS, DELETIONS, OR MODIFICATIONS SHOULD CONSTRUCTION BE DELAYED BEYOND THIS TIME LIMITATION. THE CITY, BY APPROVING THESE DRAWINGS, ASSUMES NO LIABILITY IN REGARDS TO THEIR ACCURACY OR OMISSIONS.

Revision

Appr.

Cd.

By

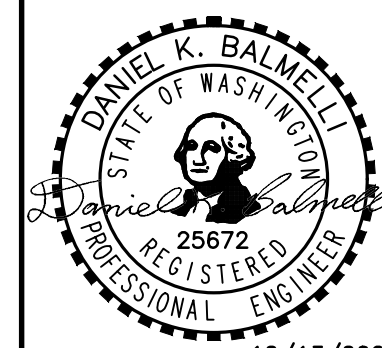
Date

Title:

PRELIMINARY  
GRADING AND STORM DRAINAGE PLAN  
FOR  
DUPONT BUSINESS PARK

AVENUE 55, LLC  
601 UNION STREET, SUITE 2930  
SEATTLE, WA 98101  
(206) 707-9696

For:

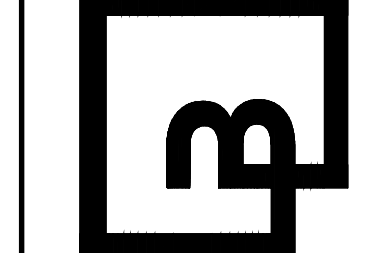


12/13/2024

Scale: Horizontal 1"=30' Vertical N/A

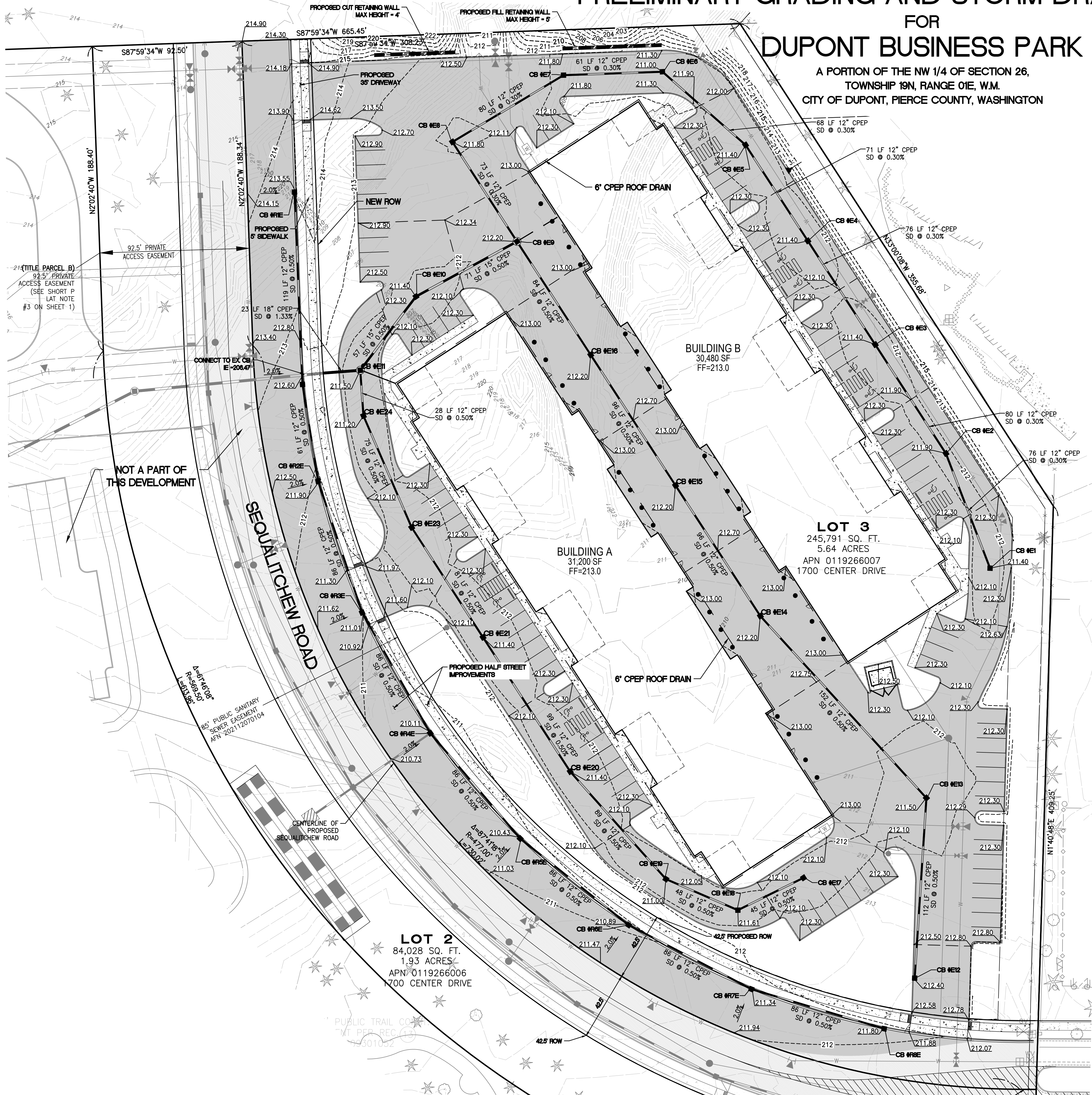
Designed: JAT Draw: JAT Checked: DKB Approved: DKB Date: 12/13/24

Barghausen  
Consulting Engineers, LLC.  
18215 72nd Avenue South  
Kent, WA 98032  
425.251.6222 barghausen.com



Job Number  
18666

Sheet  
C4 of 8



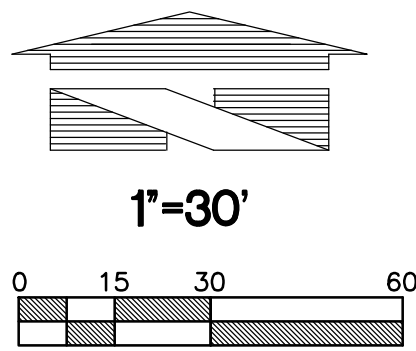
NOTE:  
ALL TREES SHOWN ON THIS SHEET  
ARE TO REMAIN DURING DEMOLITION



PRELIMINARY WATER AND SEWER PLAN

FOR  
DUPONT BUSINESS PARK

A PORTION OF THE NW 1/4 OF SECTION 26,  
TOWNSHIP 19N, RANGE 01E, W.M.  
CITY OF DUPONT, PIERCE COUNTY, WASHINGTON



APPROVED FOR CONSTRUCTION

BY: CITY OF DUPONT DATE:

THESE DRAWINGS ARE APPROVED FOR CONSTRUCTION FOR A PERIOD OF 12 MONTHS FROM THE DATE SHOWN HEREON. THE CITY RESERVES THE RIGHT TO MAKE REVISIONS, ADDITIONS, DELETIONS, OR MODIFICATIONS SHOULD CONSTRUCTION BE DELAYED BEYOND THIS TIME LIMITATION. THE CITY, BY APPROVING THESE DRAWINGS, ASSUMES NO LIABILITY IN REGARDS TO THEIR ACCURACY OR OMISSIONS.

Revision

Appr.

Clad

By

Date

No.

Title:

PRELIMINARY  
WATER AND SEWER PLAN  
FOR  
DUPONT BUSINESS PARK

For:  
AVENUE 55, LLC  
601 UNION STREET, SUITE 2930  
SEATTLE, WA 98101  
(206) 707-9696

For:



Scale:

Horizontal 1"=30'  
Vertical N/A

Designed

JAT

Drawn

JAT

Checked

DKB

Approved

DKB

Date

12/13/24

Scale

1"=30'

Sheet

C5

Job Number

18666

of

8

Job Number

18666

Sheet

C5

Job Number

18666

Sheet

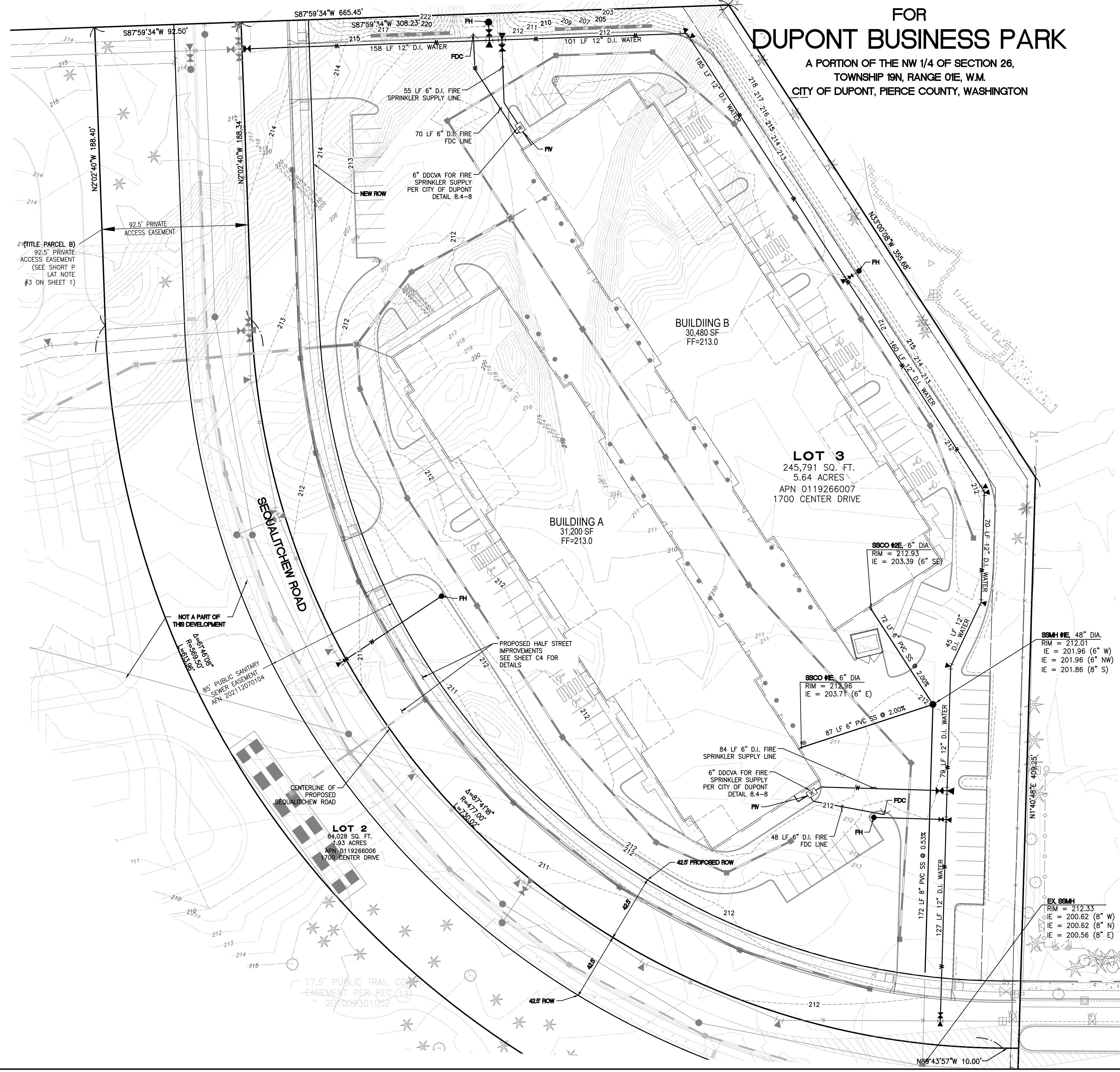
C5

Job Number

18666

Sheet

C5



NOTE:  
ALL TREES SHOWN ON THIS SHEET  
ARE TO REMAIN DURING DEMOLITION



PRELIMINARY CONSTRUCTION NOTES AND DETAILS  
FOR  
DUPONT BUSINESS PARK

A PORTION OF THE NW 1/4 OF SECTION 26,  
TOWNSHIP 19N, RANGE 01E, W.M.  
CITY OF DUPONT, PIERCE COUNTY, WASHINGTON

APPROVED FOR CONSTRUCTION

BY: \_\_\_\_\_ DATE: \_\_\_\_\_  
CITY OF DUPONT

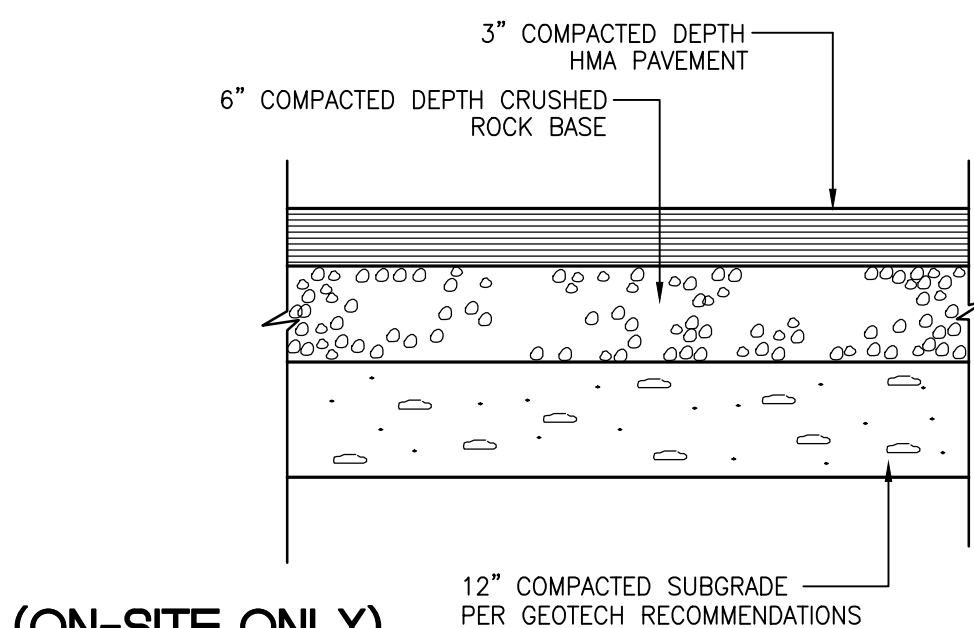
THESE DRAWINGS ARE APPROVED FOR CONSTRUCTION FOR A PERIOD OF 12 MONTHS FROM THE DATE SHOWN HEREON. THE CITY RESERVES THE RIGHT TO MAKE REVISIONS, ADDITIONS, DELETIONS, OR MODIFICATIONS SHOULD CONSTRUCTION BE DELAYED BEYOND THIS TIME LIMITATION. THE CITY, BY APPROVING THESE DRAWINGS, ASSUMES NO LIABILITY IN REGARDS TO THEIR ACCURACY OR OMISSIONS.

BCE GENERAL SITE DEVELOPMENT NOTES:

1. THE CONTRACTOR SHALL OBTAIN AND HAVE AVAILABLE COPIES OF THE APPLICABLE GOVERNING AGENCY STANDARDS AT THE JOB SITE DURING THE RELATED CONSTRUCTION OPERATIONS.
2. CONTRACTOR SHALL ASSURE THAT ALL NECESSARY PERMITS HAVE BEEN OBTAINED PRIOR TO COMMENCING WORK.
3. THE CONTRACTOR SHALL BE RESPONSIBLE FOR VERIFYING THE LOCATION, DIMENSION AND DEPTH OF ALL EXISTING UTILITIES PRIOR TO CONSTRUCTION WHETHER SHOWN ON THESE PLANS OR NOT. UTILITIES OTHER THAN THOSE SHOWN MAY EXIST ON THIS SITE. ONLY THOSE UTILITIES WITH EVIDENCE OF THEIR INSTALLATION VISIBLE AT GROUND SURFACE OR SHOWN ON RECORD DRAWING PROVIDED BY OTHERS ARE SHOWN HEREON. EXISTING UNDERGROUND UTILITY LOCATIONS SHOWN ARE APPROXIMATE ONLY AND ARE SUBJECT TO A DEGREE OF UNKNOWN VARIATION. SOME UNDERGROUND LOCATIONS SHOWN HEREON MAY HAVE BEEN TAKEN FROM PUBLIC RECORDS. BARGHAUSEN CONSULTING ENGINEERS, INC. ASSUMES NO LIABILITY FOR THE ACCURACY OF PUBLIC RECORDS OR RECORDS OF OTHERS. IF CONFLICTS SHOULD OCCUR, THE CONTRACTOR SHALL CONSULT BARGHAUSEN CONSULTING ENGINEERS, INC., TO RESOLVE ALL PROBLEMS PRIOR TO PROCEEDING WITH CONSTRUCTION.
4. IT IS THE RESPONSIBILITY OF THE CONTRACTOR TO REVIEW ALL OF THE DRAWINGS AND SPECIFICATIONS ASSOCIATED WITH THE PROJECT WORK SCOPE PRIOR TO THE INITIATION OF CONSTRUCTION. SHOULD THE CONTRACTOR FIND A CONFLICT WITH THE DOCUMENTS RELATIVE TO THE SPECIFICATIONS OR THE RELATIVE CODES, IT IS THE CONTRACTOR'S RESPONSIBILITY TO NOTIFY THE PROJECT ENGINEER OF RECORD IN WRITING PRIOR TO THE START OF CONSTRUCTION. FAILURE BY THE CONTRACTOR TO NOTIFY THE PROJECT ENGINEER SHALL CONSTITUTE ACCEPTANCE OF FULL RESPONSIBILITY BY THE CONTRACTOR TO COMPLETE THE SCOPE OF WORK AS DEFINED BY THE DRAWINGS AND IN FULL COMPLIANCE WITH LOCAL REGULATIONS AND CODES.
5. IT SHALL BE THE CONTRACTOR'S RESPONSIBILITY TO NOTIFY THE APPROPRIATE UTILITIES INVOLVED PRIOR TO CONSTRUCTION.
6. INSPECTION OF SITE WORK WILL BE ACCOMPLISHED BY A REPRESENTATIVE OF THE GOVERNING JURISDICTION. INSPECTION OF PRIVATE FACILITIES WILL BE ACCOMPLISHED BY A REPRESENTATIVE OF THE OWNER. IT SHALL BE THE CONTRACTOR'S RESPONSIBILITY TO NOTIFY THE INSPECTOR 24 HOURS IN ADVANCE OF BACKFILLING ALL CONSTRUCTION.
7. PRIOR TO ANY CONSTRUCTION OR DEVELOPMENT ACTIVITY THE CONTRACTOR SHALL CONTACT THE AGENCY AND/OR UTILITY INSPECTION PERSONNEL AND ARRANGE ANY REQUIRED PRE-CONSTRUCTION MEETING(S). CONTRACTOR SHALL PROVIDE ONE WEEK MIN. ADVANCE NOTIFICATION TO OWNER, FIELD ENGINEER AND ENGINEER OF PRE-CONSTRUCTION MEETINGS.
8. THE CONTRACTOR IS RESPONSIBLE FOR WORKER AND SITE SAFETY AND SHALL COMPLY WITH THE LATEST OSHA STANDARDS AND REGULATIONS, OR ANY OTHER AGENCY HAVING JURISDICTION FOR EXCAVATION AND TRENCHING PROCEDURES. THE CONTRACTOR IS RESPONSIBLE FOR DETERMINING THE "MEANS AND METHODS" REQUIRED TO MEET THE INTENT AND PERFORMANCE CRITERIA OF OSHA, AS WELL AS ANY OTHER ENTITY THAT HAS JURISDICTION FOR EXCAVATION AND/OR TRENCHING PROCEDURES.
9. THE CONTRACTOR SHALL BE RESPONSIBLE FOR PROVIDING ADEQUATE SAFEGUARDS, SAFETY DEVICES, PROTECTIVE EQUIPMENT, FLAGGERS, AND ANY OTHER NEEDED ACTIONS TO PROTECT THE LIFE, HEALTH, AND SAFETY OF THE PUBLIC, AND TO PROTECT PROPERTY IN CONNECTION WITH THE PERFORMANCE OF WORK COVERED BY THE CONTRACTOR. ANY WORK WITHIN THE TRAVELED RIGHT-OF-WAY THAT MAY INTERRUPT NORMAL TRAFFIC FLOW SHALL REQUIRE AT LEAST ONE FLAGGER FOR EACH LANE OF TRAFFIC AFFECTED.
10. PROTECTIVE MEASURES SHALL BE TAKEN BY THE CONTRACTOR TO PROTECT ALL ADJACENT PUBLIC AND PRIVATE PROPERTIES AT ALL TIMES DURING CONSTRUCTION. THE CONTRACTOR SHALL BE RESPONSIBLE FOR PROTECTION OF ALL EXISTING UTILITY SERVICES THAT ARE TO REMAIN OPERATIONAL WITHIN THE CONSTRUCTION AREA WHETHER SHOWN OR NOT SHOWN ON THE PLANS.
11. TWO (2) COPIES OF THESE APPROVED PLANS MUST BE ON THE JOB SITE WHENEVER CONSTRUCTION IS IN PROGRESS. ONE (1) SET WITH RECORDS OF AS-BUILT INFORMATION SHALL BE SUBMITTED TO BARGHAUSEN CONSULTING ENGINEERS, INC. AT COMPLETION OF PROJECT.
12. CONTRACTOR SHALL OBTAIN SERVICES OF A LICENSED LAND SURVEYOR TO STAKE HORIZONTAL CONTROL FOR ALL NEW IMPROVEMENTS. STAKING CONTROL SHALL BE TAKEN FROM ELECTRONIC PLAN FILES PROVIDED BY BARGHAUSEN CONSULTING ENGINEERS INC..
13. CONTRACTOR SHALL REQUEST FROM BARGHAUSEN CONSULTING ENGINEERS INC., PRIOR TO ANY CONSTRUCTION STAKING OR CONSTRUCTION WORK, A FORMAL CONSTRUCTION RELEASE IN WRITING. ALL WORK SHALL BE PERFORMED IN ACCORDANCE WITH THE APPROVED CITY OF AUBURN PERMIT DRAWINGS.

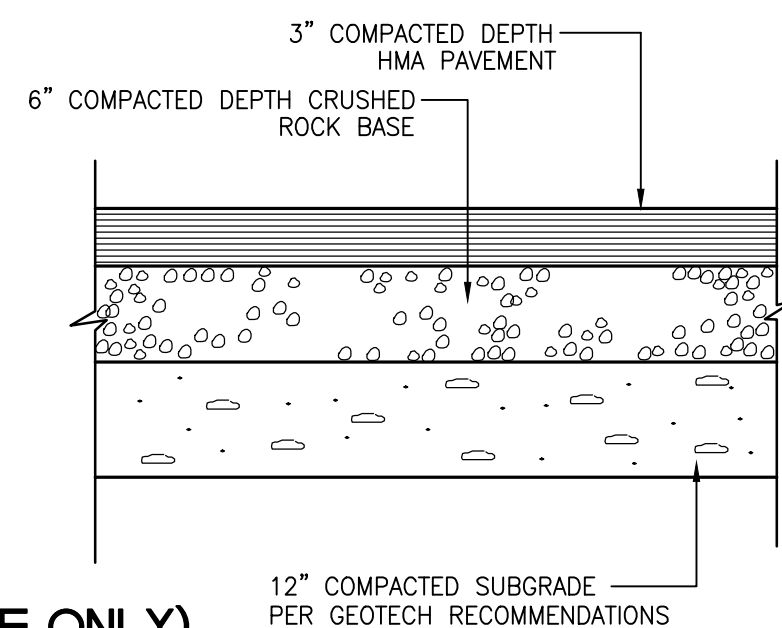
(ON-SITE ONLY)  
TYPICAL LIGHT DUTY ASPHALT PAVEMENT SECTION

NOT TO SCALE



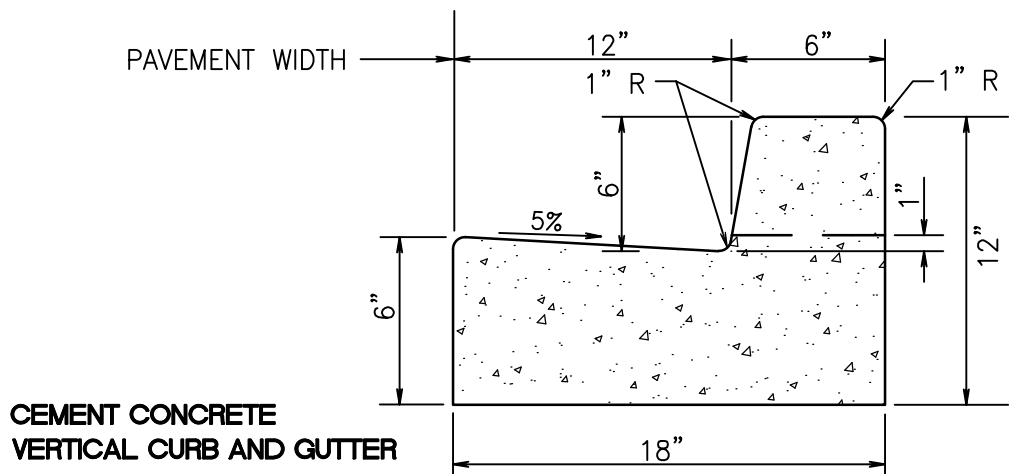
(ON-SITE ONLY)  
TYPICAL HEAVY DUTY ASPHALT PAVEMENT SECTION

NOT TO SCALE



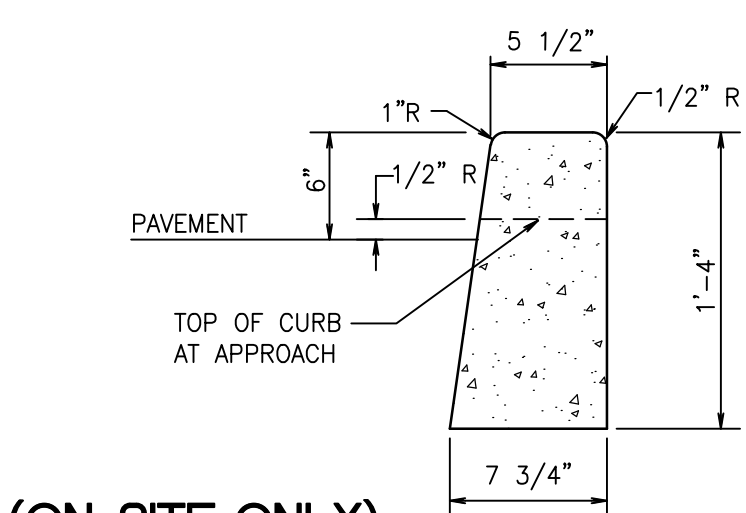
GENERAL NOTES (WATER SYSTEM CONSTRUCTION)

1. ALL IRRIGATION CROSSINGS SHALL HAVE SCHEDULE 80 SLEEVES AND THE SIZE SHALL BE PER THE APPROVED IRRIGATION DRAWINGS.
2. LIGHT POLES SHALL BE LOCATED A MINIMUM OF 3 FEET FROM ALL UNDERGROUND UTILITIES, INCLUDING WATER METERS. LIGHT POLES SHALL BE LOCATED A MINIMUM OF 5 FEET FROM FIRE HYDRANTS.
3. WATER MAINS AND FITTINGS TO BE INSTALLED SHALL BE DUCTILE IRON FOR ALL SIZES, UNLESS SPECIFICALLY NOTED OTHERWISE. THE CLASS OF THE DUCTILE IRON PIPE SHALL BE THICKNESS CLASS 52 FOR ALL DIAMETERS.
4. WATER MAINS SHALL MAINTAIN A MINIMUM OF 3 FEET AND A MAXIMUM OF 5 FEET OF COVER.
5. UTILITY CROSSINGS HAVING LESS THAN 1 FOOT OF VERTICAL SEPARATION SHALL BE CONSTRUCTED WITH CONTROLLED DENSITY FILL (CDF) TO PREVENT POSSIBLE DAMAGE TO EITHER UTILITY.
6. WATER MAIN DEFLECTIONS AT JOINTS ARE NOT TO EXCEED MANUFACTURER'S RECOMMENDATIONS PLUS AN ADDITIONAL FACTOR OF SAFETY OF 50 PERCENT.
7. IDENTIFY A MINIMUM HORIZONTAL SEPARATION OF 10 FEET BETWEEN SANITARY SEWER MAINS AND WATER MAINS, BOTH EXISTING AND PROPOSED.
8. FOR PROPOSED WATER MAINS, IDENTIFY RESTRAINED JOINT FITTINGS AND PUSH-ON JOINTS AT LOCATIONS WHERE THRUST BLOCKS WILL NOT HAVE SUFFICIENT UNDISTURBED ADJACENT AREA FOR BEARING.
9. WATER SERVICE CONNECTIONS SHALL BE MADE PERPENDICULAR TO THE MAIN.
10. THE WATER MAIN PIPES SHALL BE DISINFECTED AND TESTED BEFORE BEING PLACE IN SERVICE. ALL WATER MAIN TESTING AND DISINFECTION SHALL BE PER CITY OF DUPONT PUBLIC WORKS STANDARDS.
11. WATER MAIN STUBOUTS THAT ARE NOT USED SHALL BE DISCONNECTED AT THE MAIN, WITH A BLIND FLANGE INSTALLED AT THE TEE.
12. TEE CONNECTIONS TO EXISTING WATER MAINS SHALL BE WET TAPS.
13. SEPARATE WATER CONNECTIONS WILL BE REQUIRED FOR DOMESTIC, FIRE, AND IRRIGATION. ALL SERVICES SHALL INCLUDE BACKFLOW PREVENTION DEVICES LOCATED OUTSIDE OF ANY PROPOSED BUILDINGS.
14. ALL FIRE PROTECTION SYSTEM INSTALLATIONS, INCLUDING PIPELINES AND DOUBLE DETECTOR CHECK ASSEMBLIES, ARE SUBJECT TO THE CONSTRUCTION STANDARDS OF NFPA 24 AND TO THE INSPECTION AND TESTING REQUIREMENTS OF THE CITY OF DUPONT FIRE DEPARTMENT.
15. THE FIRE PROTECTION SYSTEMS, INCLUDING THE BACKFLOW PREVENTION DEVICES, UNDERGROUND FIRE SERVICE LINES, AND FIRE DEPARTMENT CONNECTIONS, ARE SUBJECT TO SEPARATE REVIEW, PERMITTING, AND APPROVAL BY THE CITY OF DUPONT FIRE DEPARTMENT.
16. RELOCATE THE FIRE DEPARTMENT CONNECTIONS (FDCS) TO PLANTER ISLANDS OR OTHER LOCATIONS, AS FEASIBLE, TO BE OUTSIDE OF THE BUILDING COLLAPSE ZONES.
17. THE APPLICANT SHALL FURNISH METER SIZING CALCULATIONS FOR DOMESTIC AND FIRE WATER SERVICES. THE SPRINKLER SYSTEM DESIGN, INCLUDING CONFIRMATION OF THE PROVIDED SIZING FOR THE FIRE LINE COMPONENTS SHALL BE REVIEWED AND APPROVED BY THE CITY BUILDING DEPARTMENT AND FIRE DEPARTMENT AS PART OF THE BUILDING PERMIT PROCESS. EACH FIRE LINE CONNECTION TO A CITY WATER MAIN WILL REQUIRE A DOUBLE DETECTOR CHECK VALVE ASSEMBLY (DDCVA) IN AN UNDERGROUND VAULT AND A FIRE DEPARTMENT CONNECTION (FDC) WITHIN 50 FEET OF A FIRE HYDRANT.



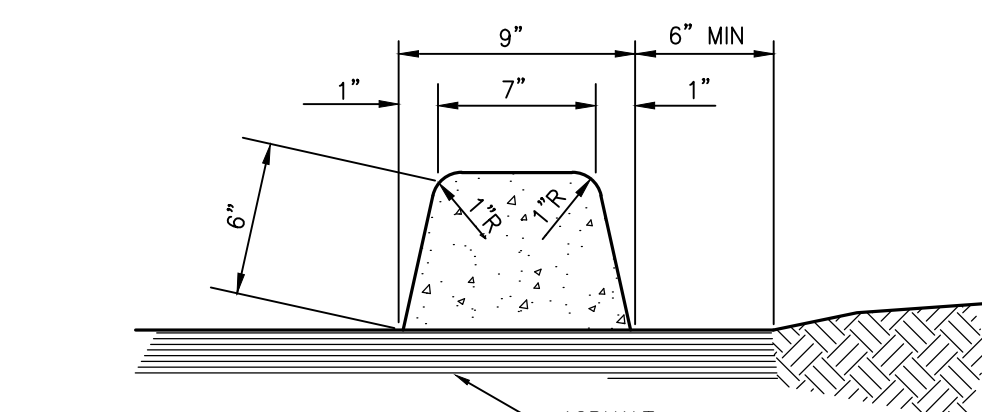
CEMENT CONCRETE  
VERTICAL CURB AND GUTTER  
(ON-SITE ONLY)  
CURB AND GUTTER DETAIL  
WSDOT STANDARD PLAN F-10-12-00

NOT TO SCALE



(ON-SITE ONLY)  
6" X 18" VERTICAL CURB

NOT TO SCALE

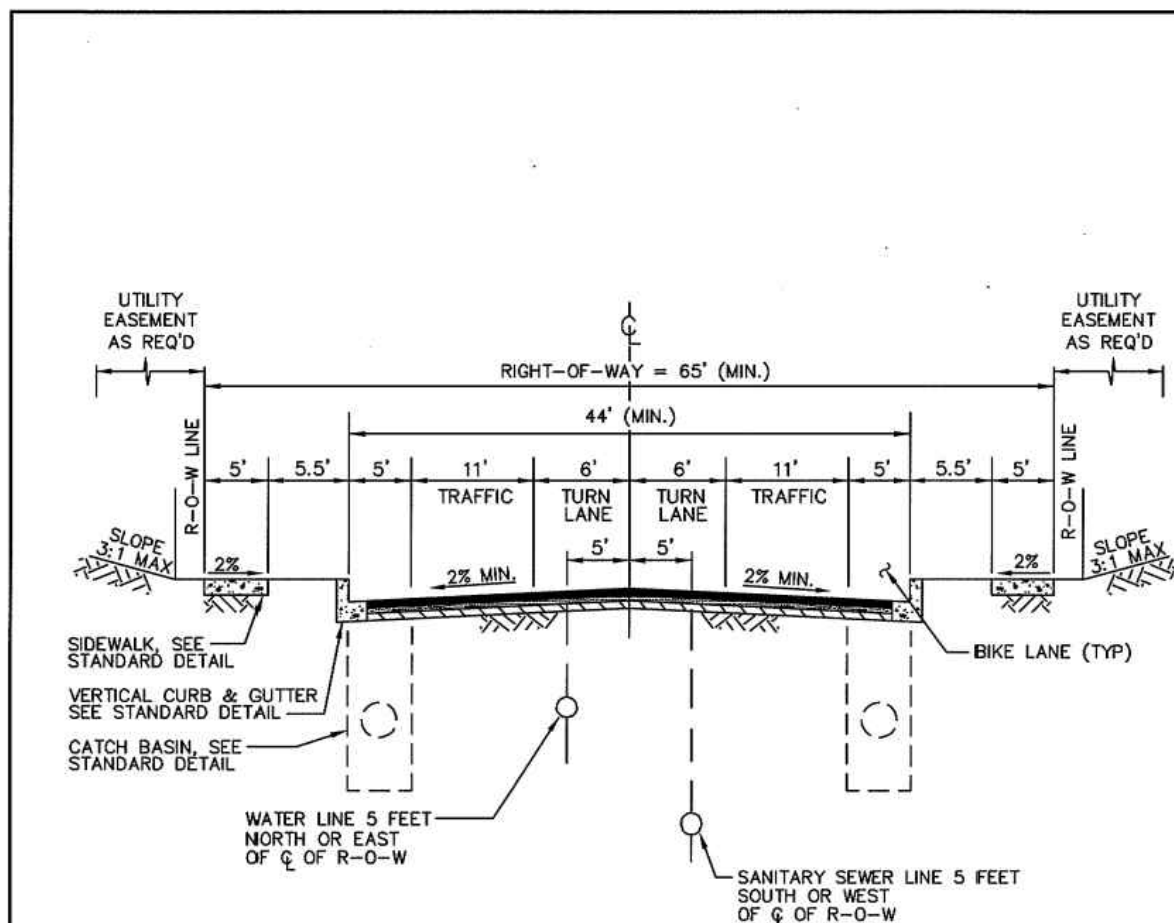


EXTRUDED CONCRETE CURB DETAIL

NOT TO SCALE

GENERAL NOTES (STREET CONSTRUCTION)

1. A PRECONSTRUCTION CONFERENCE SHALL BE HELD PRIOR TO THE START OF CONSTRUCTION. THE CONTRACTOR SHALL BE RESPONSIBLE FOR SECURING ALL NECESSARY PERMITS PRIOR TO CONSTRUCTION.
2. A COPY OF THE APPROVED ROADWAY DRAWINGS MUST BE ON THE JOB SITE WHENEVER CONSTRUCTION IS IN PROGRESS.
3. ALL WORKMANSHIP AND MATERIALS SHALL BE IN ACCORDANCE WITH CITY OF DUPONT'S PUBLIC WORKS STANDARDS AND STORMWATER MANAGEMENT MANUAL AND THE MOST CURRENT EDITION OF THE STATE OF WASHINGTON STANDARD SPECIFICATIONS FOR ROAD, BRIDGE, AND MUNICIPAL CONSTRUCTION.
4. IT IS THE RESPONSIBILITY OF THE CONTRACTOR TO PROVIDE ADEQUATE TEMPORARY TRAFFIC CONTROL TO ENSURE TRAFFIC SAFETY DURING CONSTRUCTION ACTIVITIES. THEREFORE, THE CONTRACTOR SHALL SUBMIT A TRAFFIC CONTROL PLAN TO THE PUBLIC WORKS DEPARTMENT AT LEAST 48 HOURS PRIOR TO STARTING ANY WORK IN THE RIGHT-OF-WAY. ALL TRAFFIC CONTROL DEVICES SHALL CONFORM TO THE "MANUAL ON UNIFORM TRAFFIC CONTROL DEVICES" (MUTCD).
5. ALL CURB AND GUTTER, STREET GRADES, SIDEWALK GRADES, AND ANY OTHER VERTICAL AND/OR HORIZONTAL ALIGNMENT SHALL BE STAKED BY A PROFESSIONAL ENGINEER OR SURVEYING FIRM CAPABLE OF PERFORMING SUCH WORK.
6. ANY ROADWAY SIGNAGE OR STRIPING REMOVED OR TEMPORARILY MOVED BY THE CONTRACTOR SHALL BE RESTORED SO AS TO MEET THE CURRENT MUTCD STANDARDS.
7. WHERE NEW ASPHALT JOINS EXISTING, THE EXISTING ASPHALT SHALL BE CUT TO A NEAT VERTICAL EDGE AND TACKED WITH ASPHALT EMULSION TYPE CSS-1 IN ACCORDANCE WITH THE STANDARD SPECIFICATIONS. THE JOINT SHALL BE SEALED WITH GRADE AR-400CW PAVING ASPHALT.
8. COMPACTION OF SUBGRADE, ROCK, AND ASPHALT SHALL BE IN ACCORDANCE WITH THE WSDOT/APWA STANDARD SPECIFICATIONS. SEE CITY OF DUPONT PUBLIC WORKS STANDARDS TABLE 10.2-1 FOR TESTING AND SAMPLING FREQUENCIES. DENSITY TEST REPORTS WILL BE REQUIRED FOR ALL PUBLIC ROADWAYS.
9. FORM AND SUBGRADE INSPECTION BY THE CITY IS REQUIRED BEFORE PLACING CONCRETE. TWENTY-FOUR HOURS ADVANCE NOTICE IS REQUIRED FOR THE SCHEDULING OF INSPECTION.
10. CALL UNDERGROUND UTILITY LOCATE LINE, 1-800-424-5555, PRIOR TO ANY EXCAVATION.
11. DEAD-END STREETS SHALL BE APPROPRIATELY SIGNED AND BARRICADED.
12. WHERE A SIDEWALK IS TO BE CONSTRUCTED ABOVE A SLOPE OR ADJACENT TO A ROCKERY OR RETAINING WALL, WHERE THE LOWEST FINISHED ELEVATION OF THE SLOPE, ROCKERY, OR RETAINING WALL IS TO BE 30 INCHES OR MORE BELOW THE FINISHED ELEVATION OF THE SIDEWALK, A SAFETY RAILING SHALL BE REQUIRED WHEN:
  - (A) THE PLANE OF THE WALL FACE IS LESS THAN 4 FEET IN HORIZONTAL DISTANCE FROM THE OUTSIDE EDGE OF THE SIDEWALK.
  - (B) THE PLANE OF THE WALL FACE IS GREATER THAN 4-FEET HORIZONTAL DISTANCE TO THE OUTSIDE EDGE OF THE SIDEWALK, BUT THE SLOPE DOWN TO THE WALL TOP EXCEEDS THREE TO ONE.
  - (C) THE SLOPES ADJACENT TO THE SIDEWALK AVERAGE GREATER THAN TWO TO ONE.



GENERAL NOTES:

1. FOR ADDITIONAL REQUIREMENTS, SEE TABLE 2.4-2 OF THE PUBLIC WORKS STANDARDS.
2. PAVEMENT DESIGN SHALL BE BY A LICENSED ENGINEER.
3. FOR STREETS ADJACENT TO OPEN SPACE/SENSITIVE AREAS SEE DWG. No. 2.4-2.4

CITY OF DUPONT			
COMMERCIAL ACCESS STREET BUSINESS AND TECHNOLOGY PARK			
APPROVED: <i>[Signature]</i> CITY OF DUPONT		DWG. NO. 2.4-2.3	
DATE: 9/11	DRWN: E.T.	CHKD: T.N.	SCALE: NO. SCALE

Revision

Appr.

Ctd.

By

Date

No.

Title:

PRELIMINARY  
CONSTRUCTION NOTES AND DETAILS  
FOR  
DUPONT BUSINESS PARK

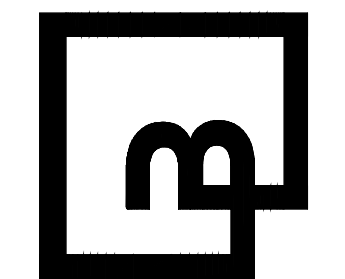
For:  
AVENUE 55, LLC  
601 UNION STREET, SUITE 2930  
SEATTLE, WA 98101  
(206) 707-9696



12/13/2024

Scale:	Horizontal	N/A	Vertical	N/A
Designed	JAT	Drawn	JAT	Checked
			DKB	DKB
Approved				
Date	12/13/24			

Barghausen  
Consulting Engineers, LLC.  
18215 72nd Avenue South  
Kent, WA 98032  
425.251.6222  
barghausen.com



Job Number  
18666  
Sheet  
C6 of 8



PRELIMINARY CONSTRUCTION NOTES AND DETAILS  
FOR  
DUPONT BUSINESS PARK

A PORTION OF THE NW 1/4 OF SECTION 26,  
TOWNSHIP 19N, RANGE 01E, W.M.  
CITY OF DUPONT, PIERCE COUNTY, WASHINGTON

APPROVED FOR CONSTRUCTION

BY: CITY OF DUPONT DATE:

THESE DRAWINGS ARE APPROVED FOR CONSTRUCTION FOR  
A PERIOD OF 12 MONTHS FROM THE DATE SHOWN HEREON.  
THE CITY RESERVES THE RIGHT TO MAKE REVISIONS,  
ADDITIONS, DELETIONS, OR MODIFICATIONS SHOULD  
CONSTRUCTION BE DELAYED BEYOND THIS TIME LIMITATION.  
THE CITY, BY APPROVING THESE DRAWINGS, ASSUMES NO  
LIABILITY IN REGARDS TO THEIR ACCURACY OR OMISSIONS.

Revision

Appr.

By

Date

No.

Title:

PRELIMINARY  
CONSTRUCTION NOTES AND DETAILS  
FOR  
DUPONT BUSINESS PARK

AVENUE 55, LLC  
601 UNION STREET, SUITE 2930  
SEATTLE, WA 98101  
(206) 707-9696

For:

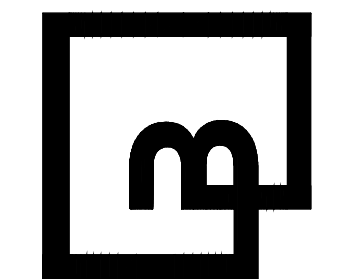


12/13/2024

Scale: Horizontal N/A Vertical N/A

Designed: JAT Draw: JAT Checked: DKB Approved: DKB Date: 12/13/24

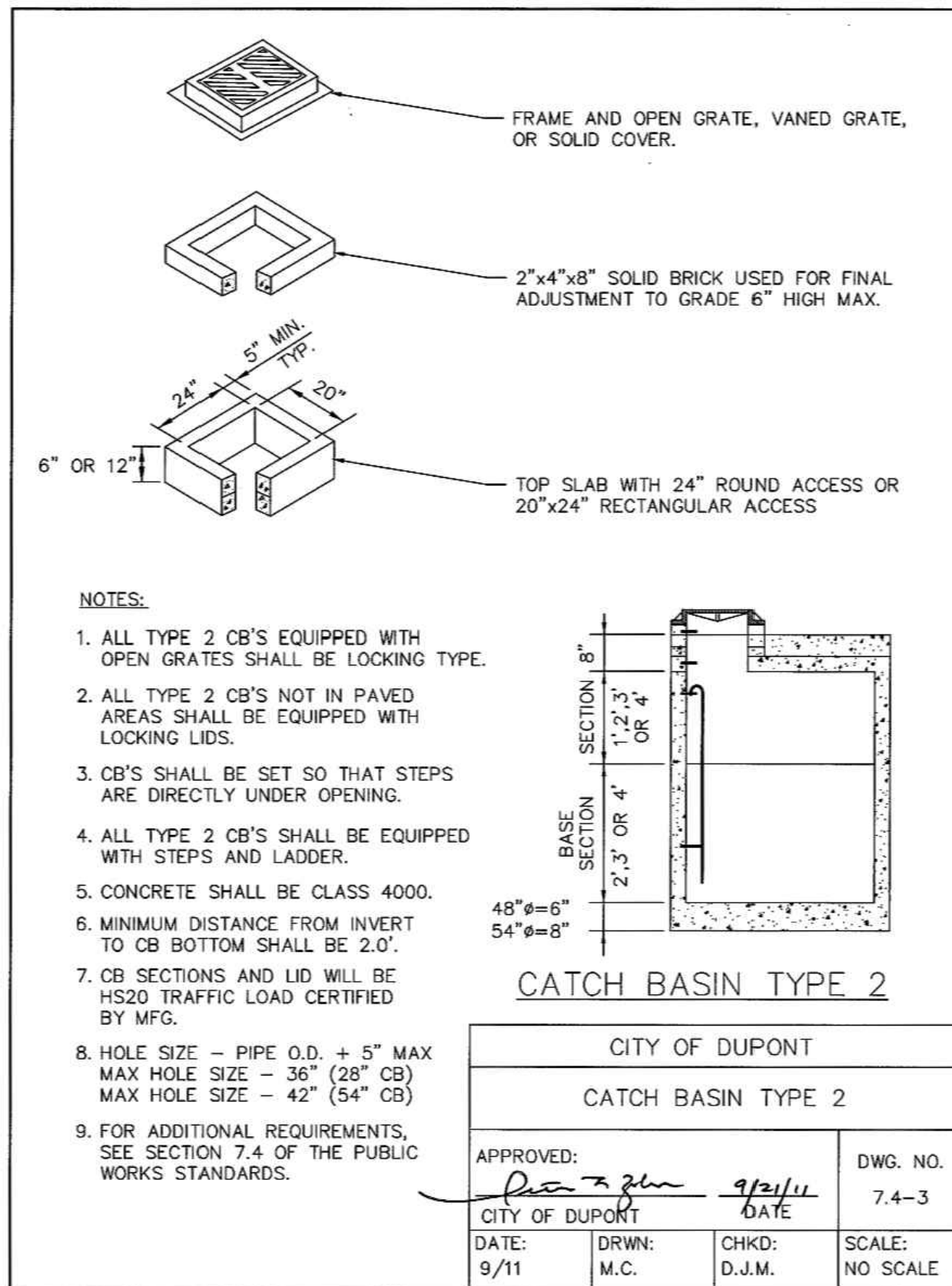
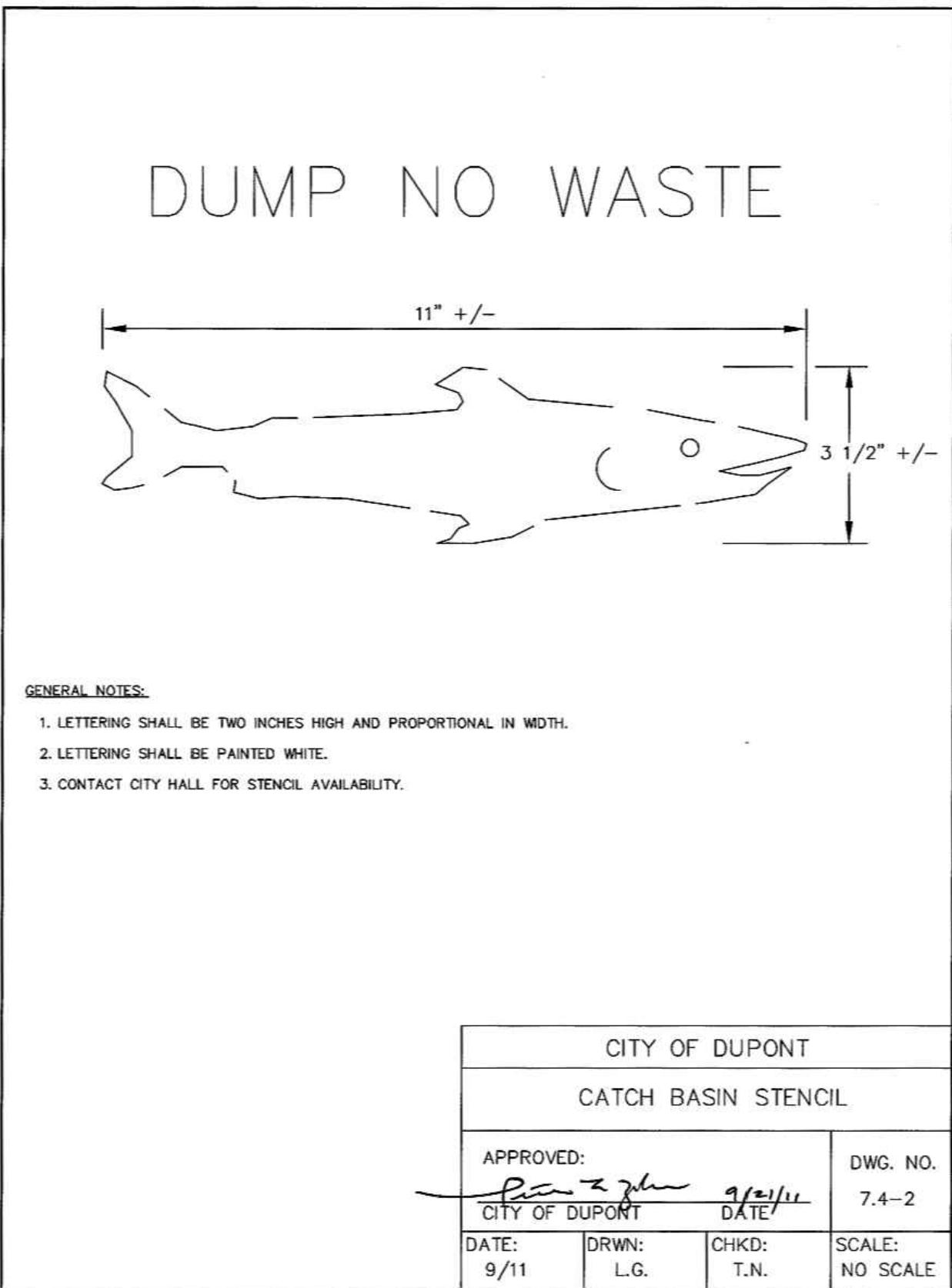
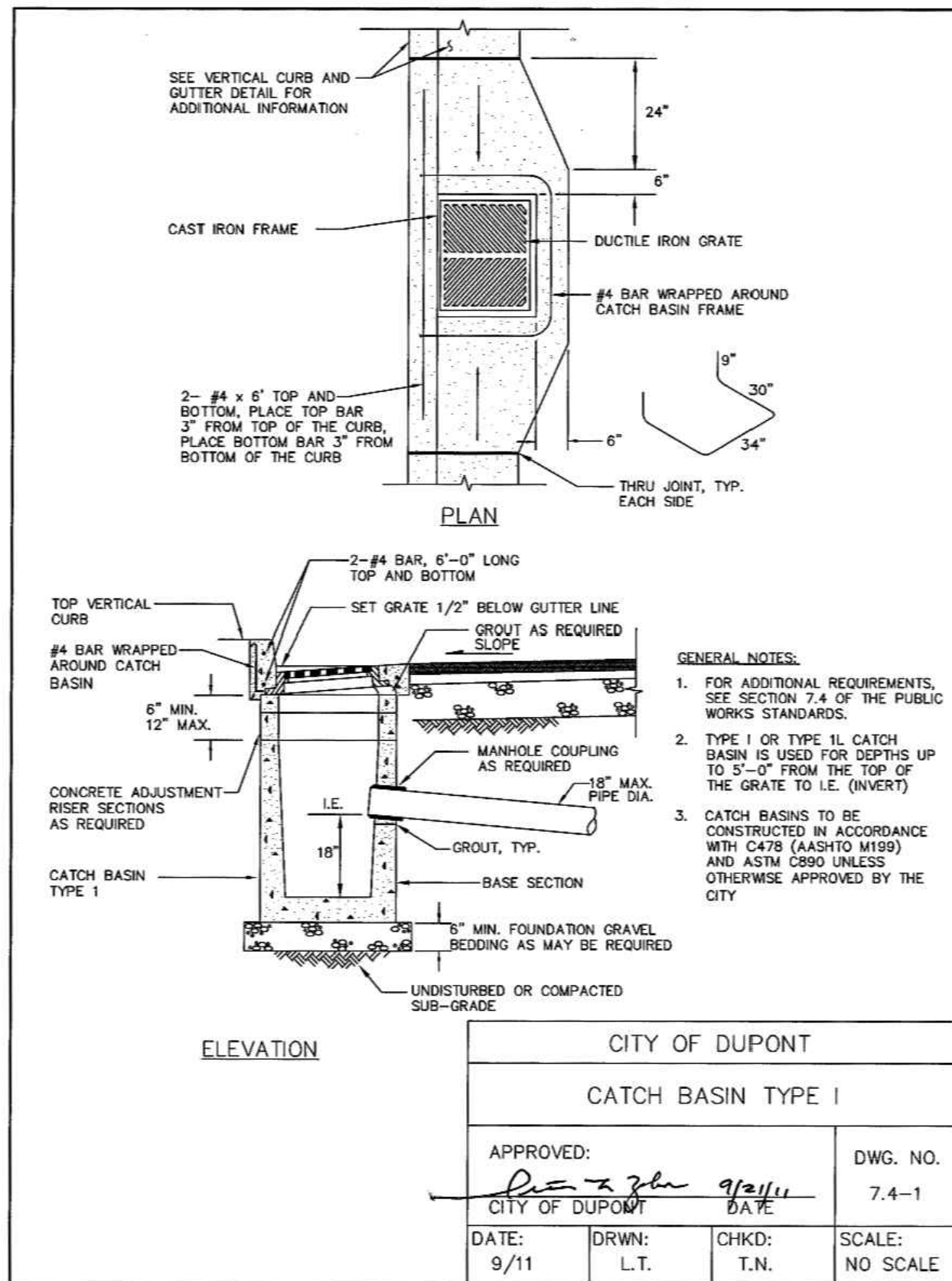
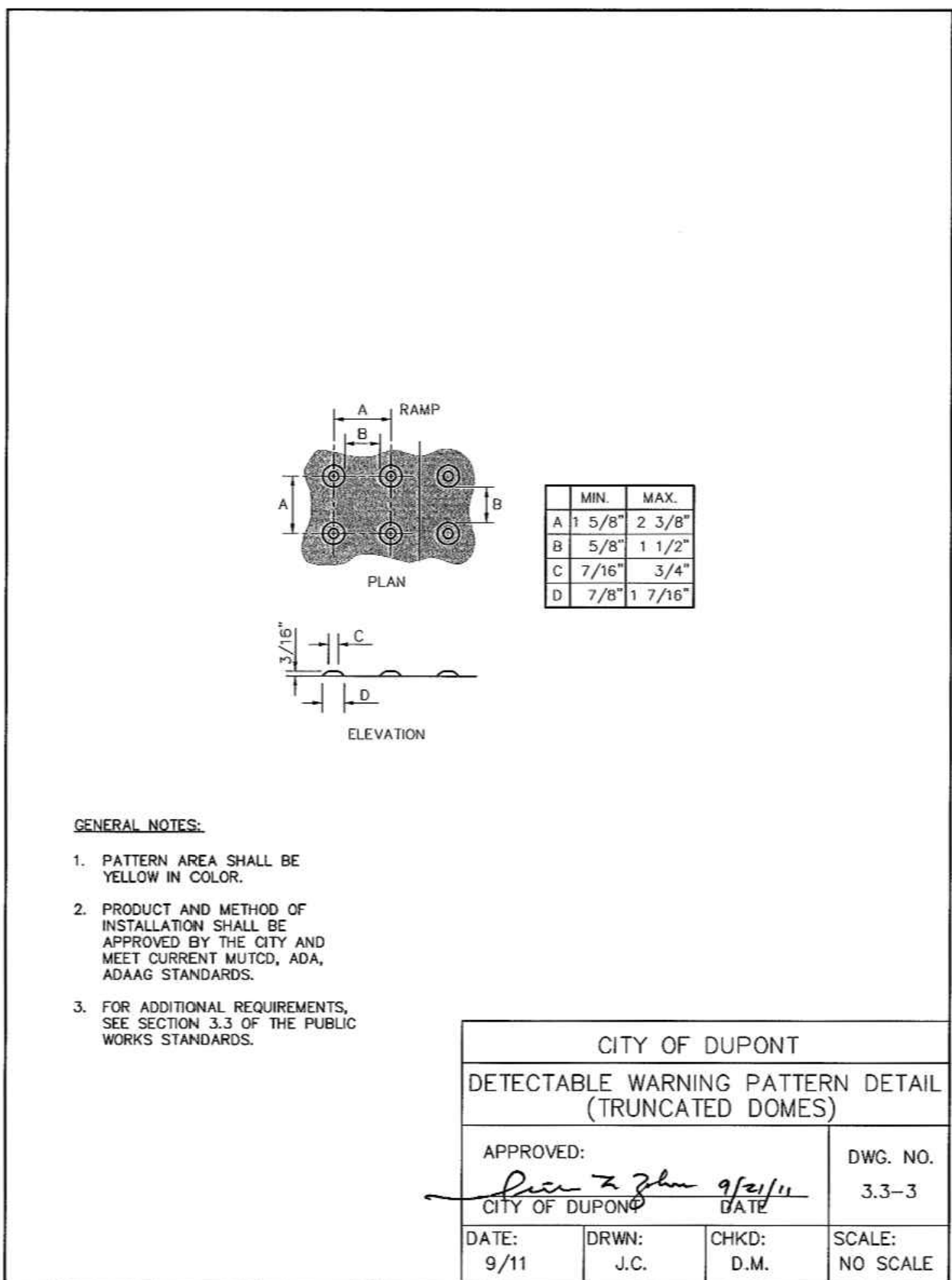
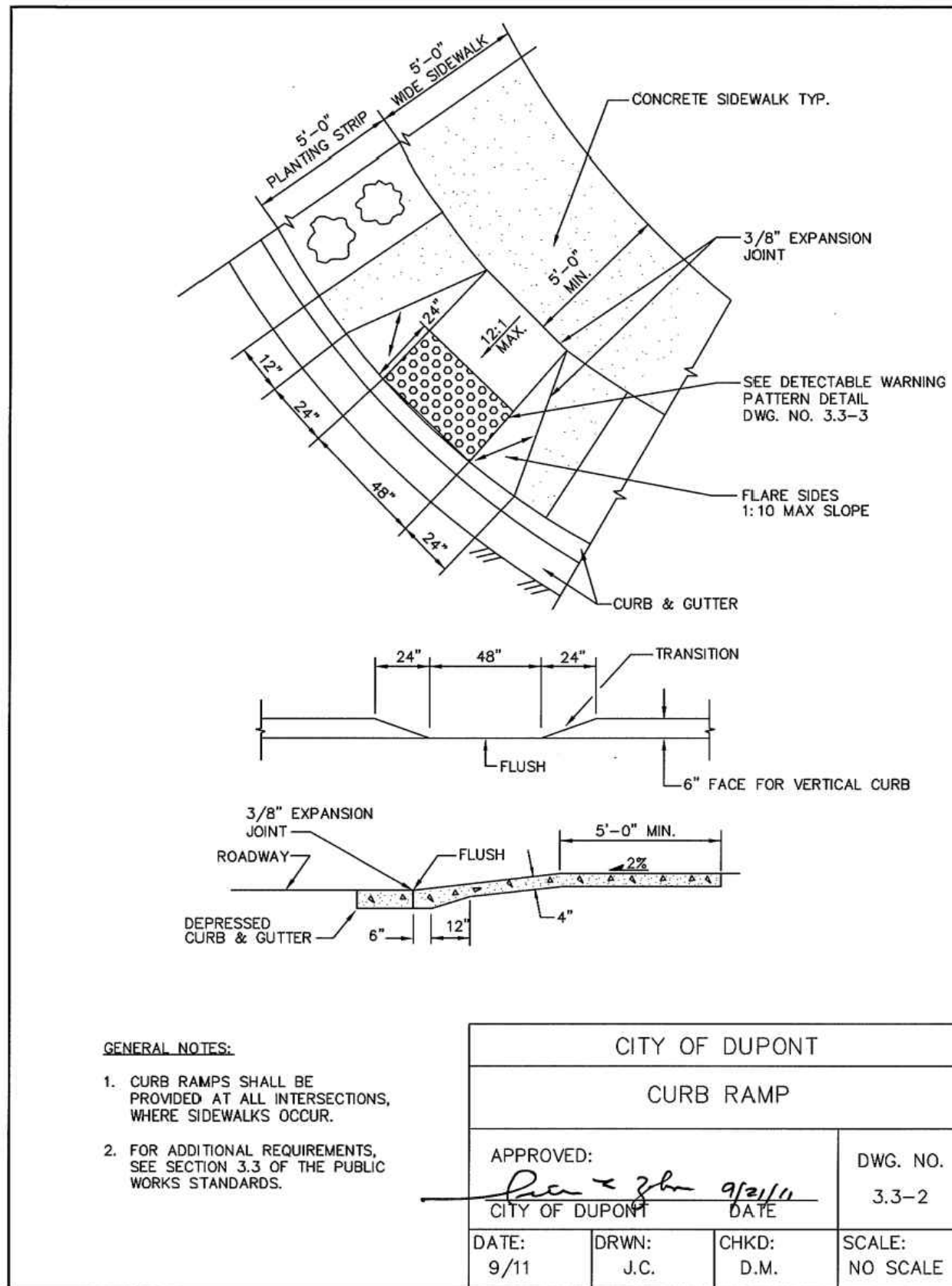
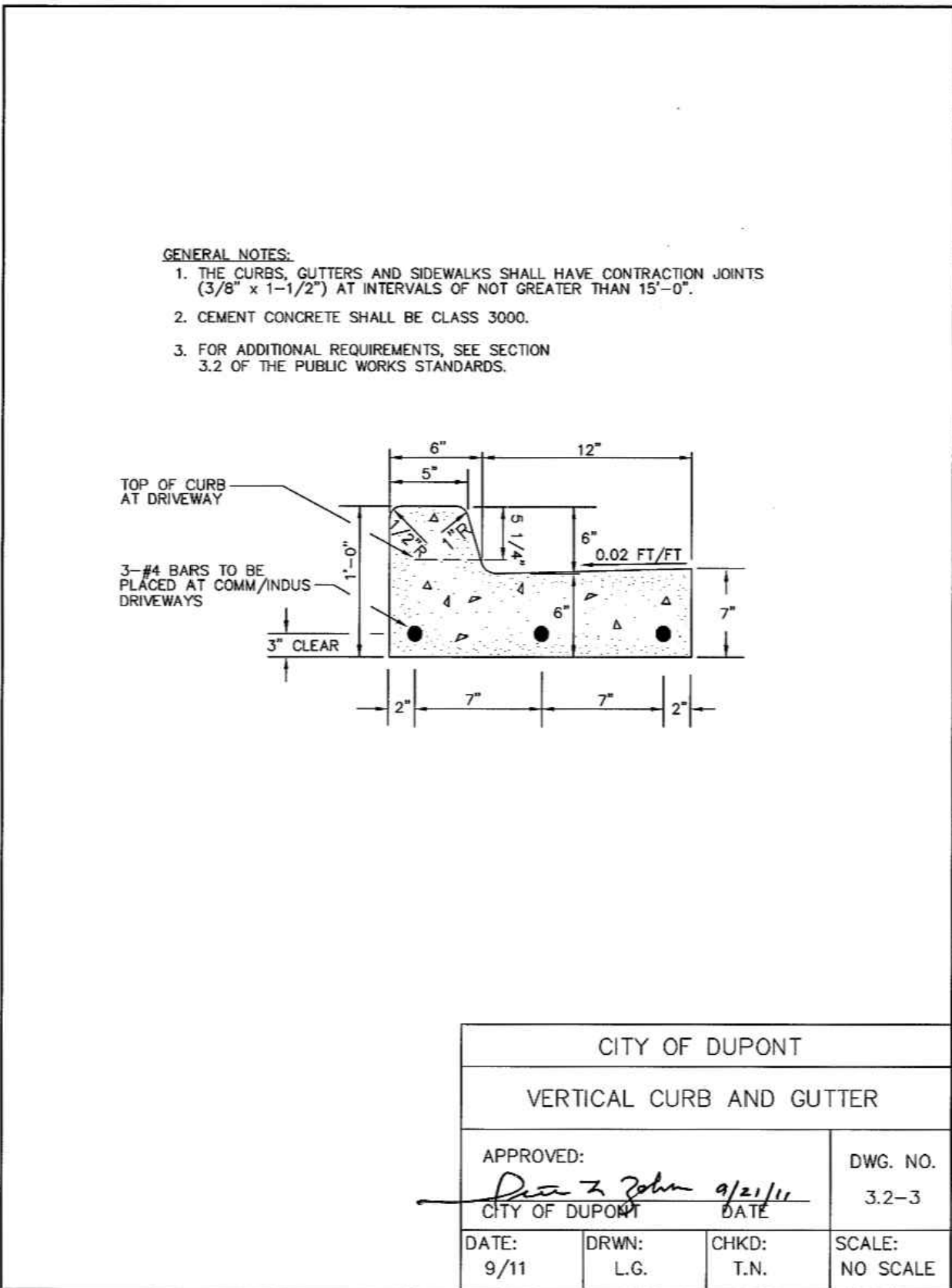
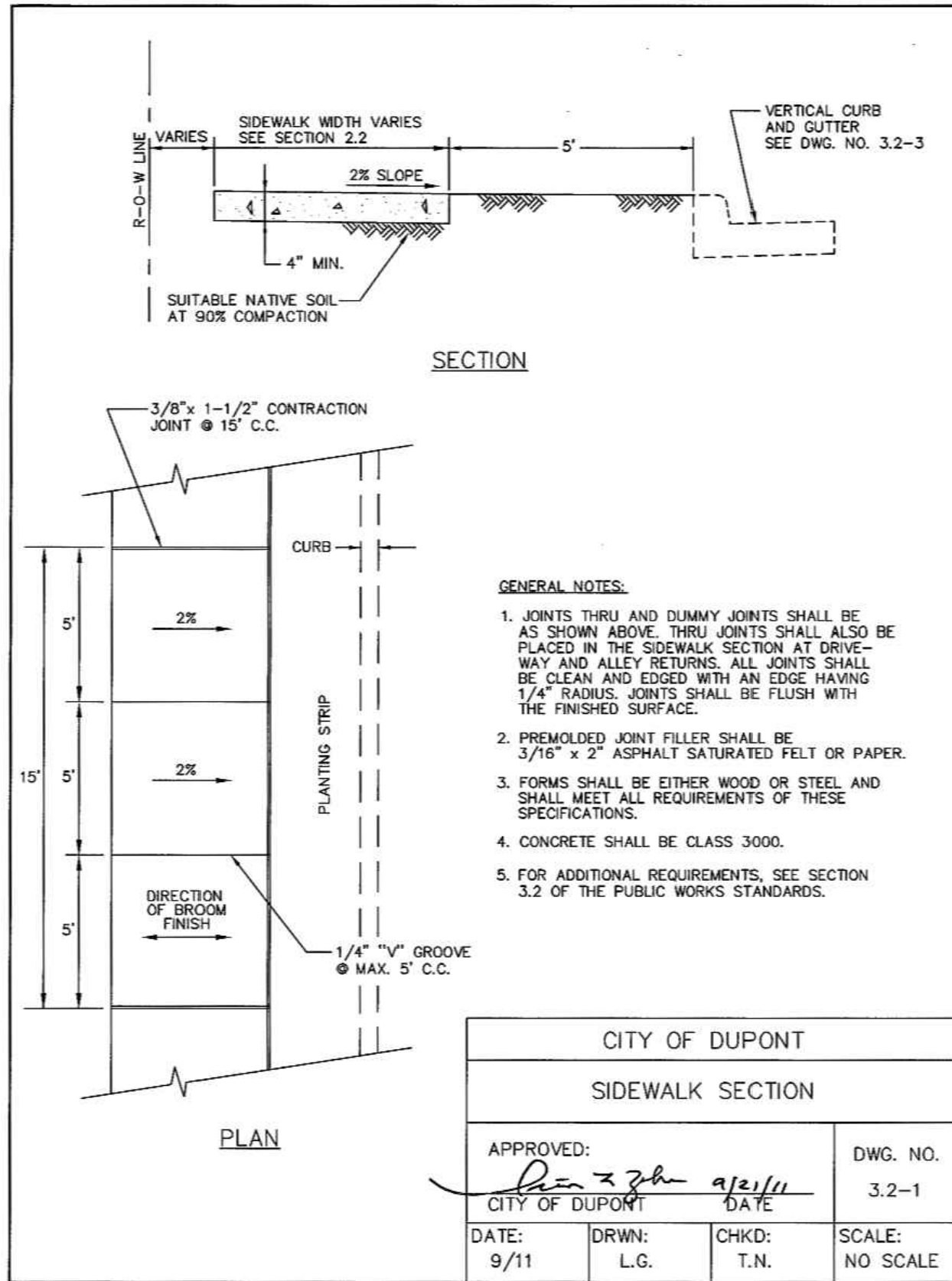
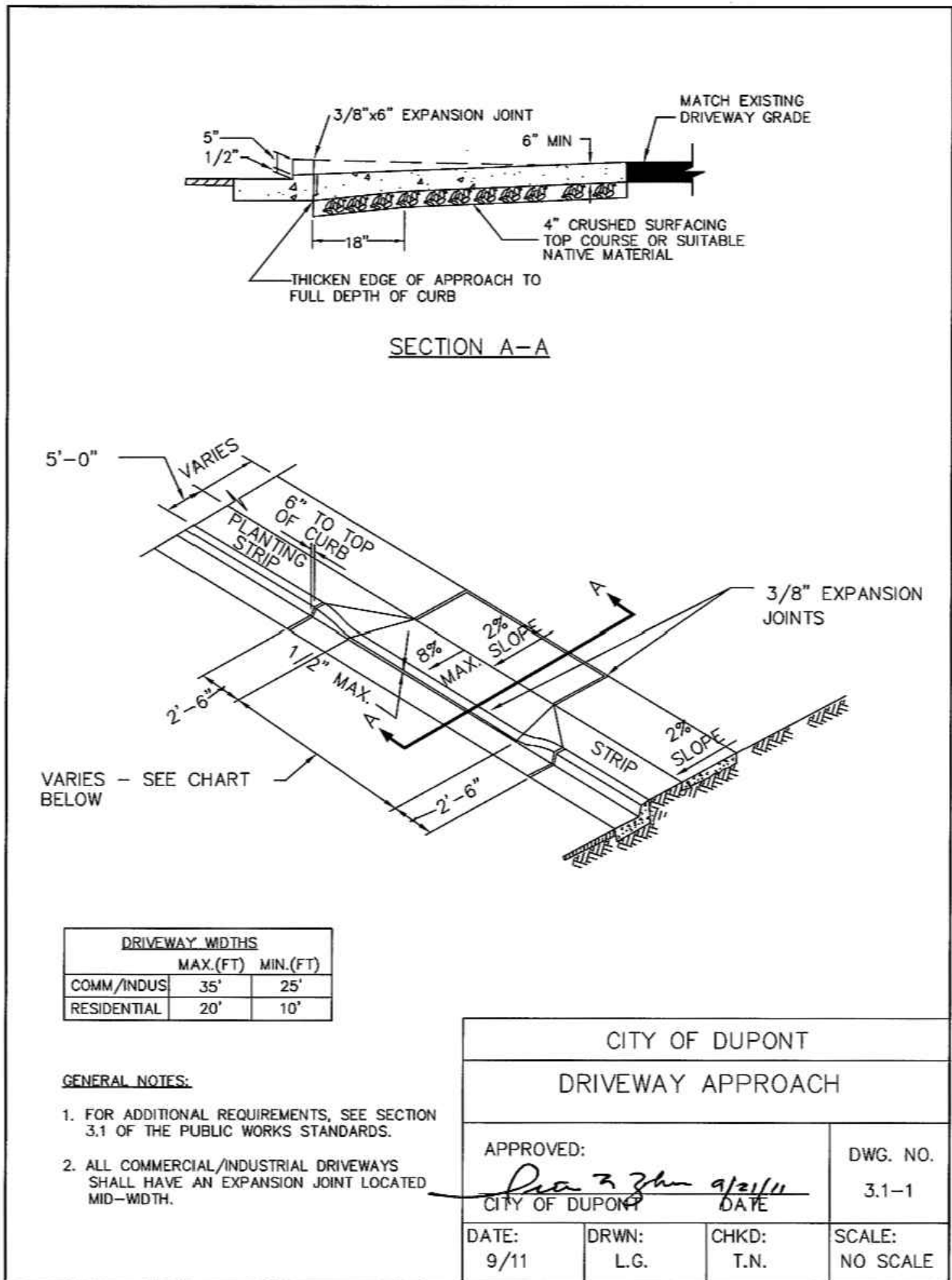
Barghausen  
Consulting Engineers, LLC.  
18215 72nd Avenue South  
Kent, WA 98032  
425.251.6222 barghausen.com



Job Number  
18666

Sheet

C7 of 8





PRELIMINARY CONSTRUCTION NOTES AND DETAILS

FOR  
DUPONT BUSINESS PARK

A PORTION OF THE NW 1/4 OF SECTION 26,  
TOWNSHIP 19N, RANGE 01E, W.M.  
CITY OF DUPONT, PIERCE COUNTY, WASHINGTON

APPROVED FOR CONSTRUCTION

BY: CITY OF DUPONT DATE:

THESE DRAWINGS ARE APPROVED FOR CONSTRUCTION FOR  
A PERIOD OF 12 MONTHS FROM THE DATE SHOWN HEREON.  
THE CITY RESERVES THE RIGHT TO MAKE REVISIONS,  
ADDITIONS, DELETIONS, OR MODIFICATIONS SHOULD  
CONSTRUCTION BE DELAYED BEYOND THIS TIME LIMITATION.  
THE CITY, BY APPROVING THESE DRAWINGS, ASSUMES NO  
LIABILITY IN REGARDS TO THEIR ACCURACY OR OMISSIONS.

Revision

PRELIMINARY  
CONSTRUCTION NOTES AND DETAILS  
FOR  
DUPONT BUSINESS PARK

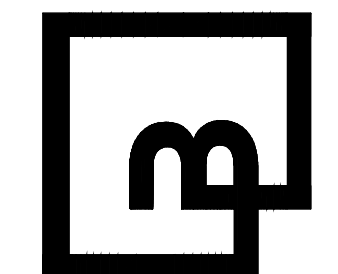
AVENUE 55, LLC  
601 UNION STREET, SUITE 2930  
SEATTLE, WA 98101  
(206) 707-9696

For:

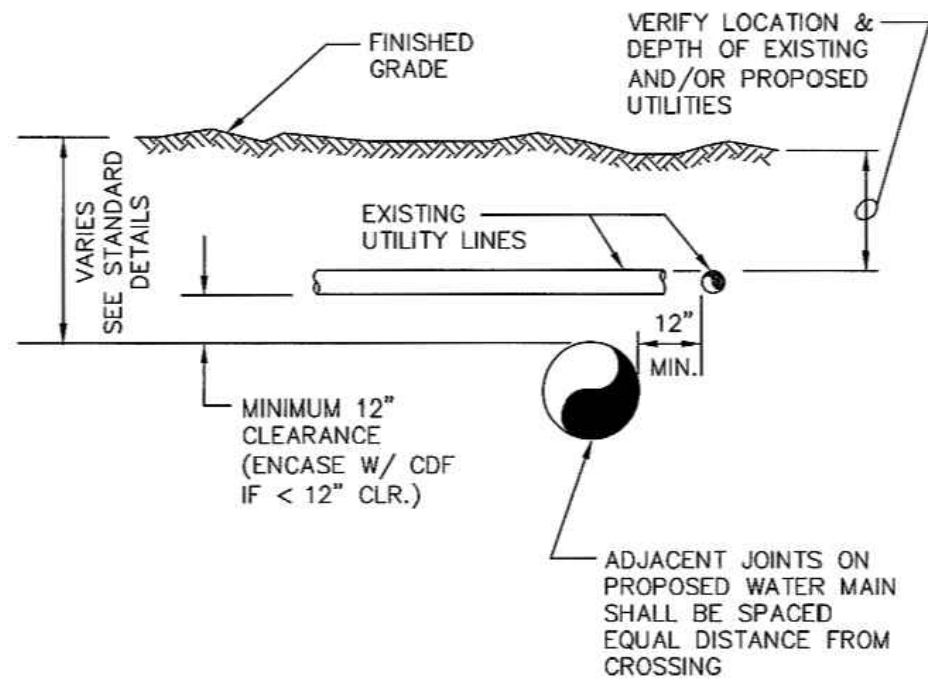


Scale: Horizontal N/A Vertical N/A  
Designed: JAT Draw: JAT Checked: DKB Approved: DKB Date: 12/13/24

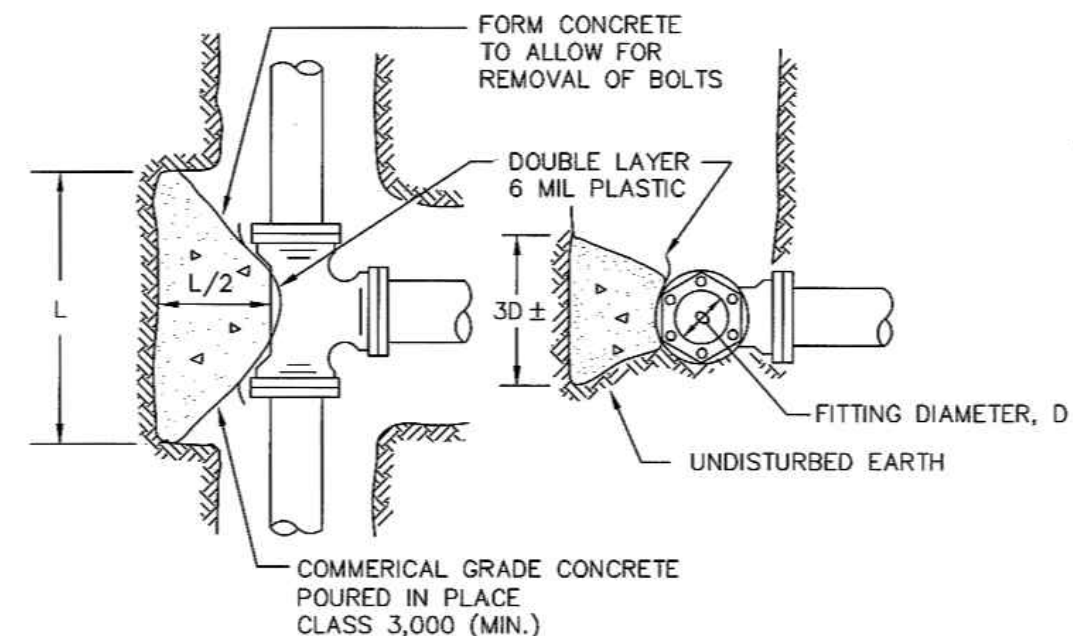
Barghausen  
Consulting Engineers, LLC.  
18215 72nd Avenue South  
Kent, WA 98032  
425.251.6222 barghausen.com



Job Number  
18666  
Sheet  
C8 of 8



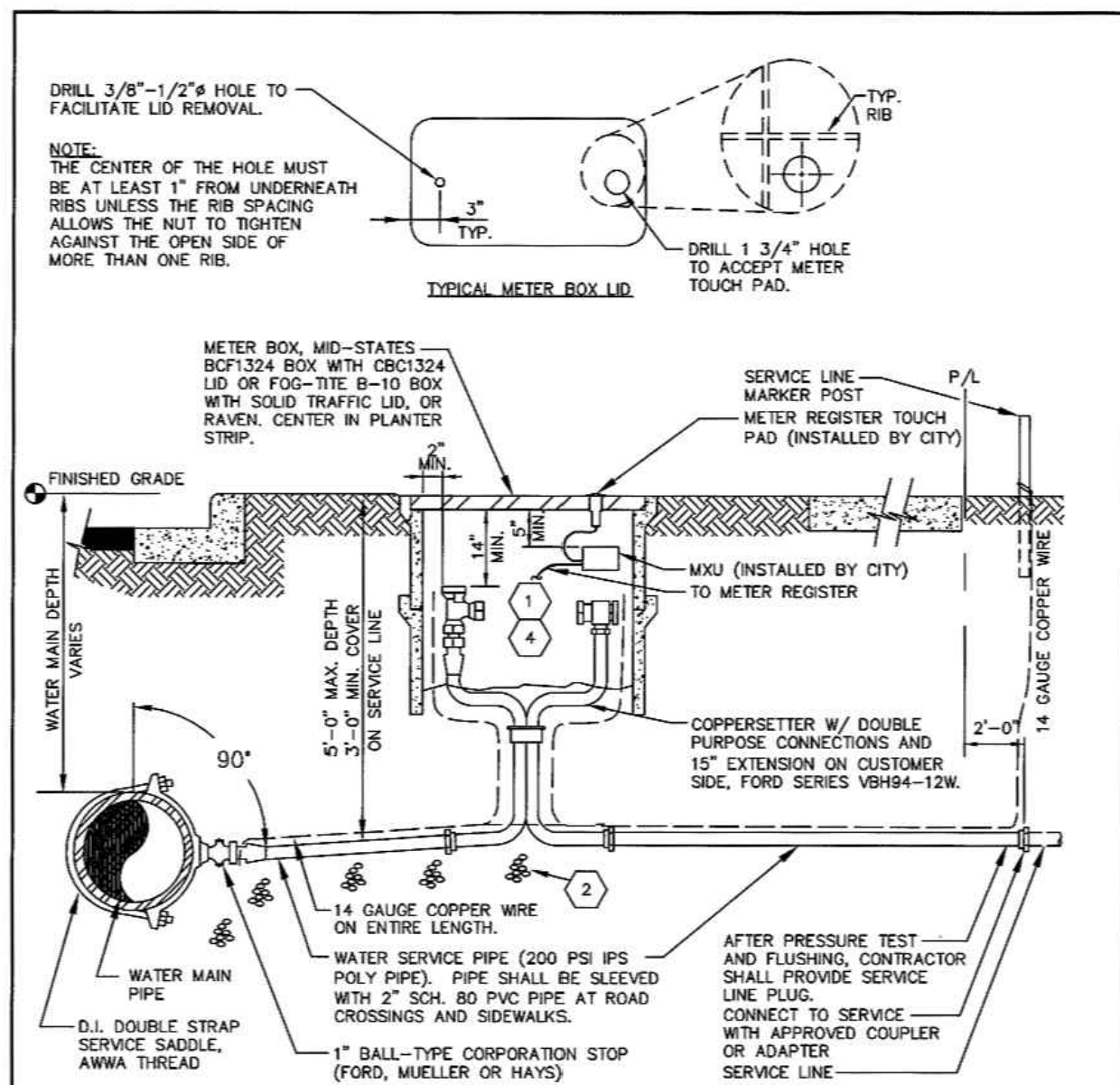
CITY OF DUPONT			
TYPICAL UTILITY CROSSING			
APPROVED:	DATE:	DWG. NO.	
<i>[Signature]</i>	9/21/11	8.2-3	
CITY OF DUPONT	DATE:	DRWN:	CHKD:
	9/11	L.L.	T.N.
		SCALE:	NO SCALE



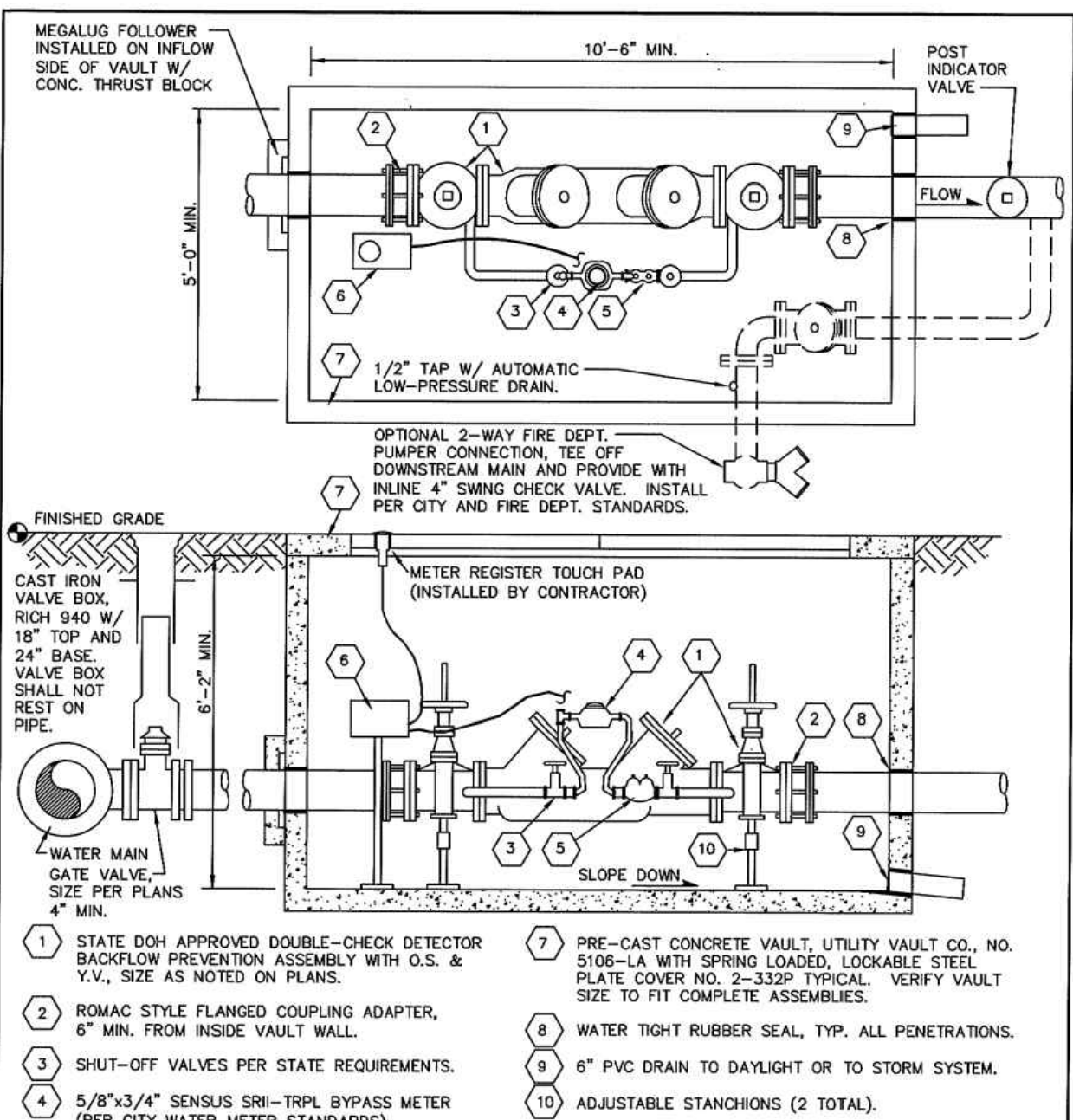
MINIMUM BEARING AREA TABLE					
FITTING D	TEE	90°	45°	22 1/2°	11 1/4°
6"	4 SQ.FT.	6 SQ.FT.	3 SQ.FT.	2 SQ.FT.	2 SQ.FT.
8"	7 SQ.FT.	10 SQ.FT.	6 SQ.FT.	3 SQ.FT.	2 SQ.FT.
10"	10 SQ.FT.	15 SQ.FT.	9 SQ.FT.	5 SQ.FT.	3 SQ.FT.
12"	14 SQ.FT.	22 SQ.FT.	12 SQ.FT.	8 SQ.FT.	4 SQ.FT.
16"	25 SQ.FT.	38 SQ.FT.	21 SQ.FT.	11 SQ.FT.	7 SQ.FT.
18"	32 SQ.FT.	48 SQ.FT.	27 SQ.FT.	14 SQ.FT.	8 SQ.FT.

- NOTES:
- 1) BEARING AREA TABLE BASED ON 250 PSI PRESSURE AND 2000 PSF SOIL BEARING. IF PRESSURE IS GREATER OR SOIL BEARING IS LESS, THE THRUST BLOCK SIZE SHALL BE INCREASED. DESIGN FOR THRUST BLOCK TO BE PROVIDED BY THE DEVELOPER.
  - 2) THIS TABLE REPRESENTS THE "MINIMUM" CONSTRUCTION STANDARDS. THE DEVELOPER'S ENGINEER SHALL BE RESPONSIBLE FOR THE DESIGN AND SIZING OF ALL BLOCKING BASED ON SOIL CONDITIONS, TEST PRESSURES, AND OTHER RELEVANT CONDITIONS, AND SHALL SUBMIT THE PROPOSED DESIGN AND SIZING TO THE CITY FOR REVIEW AND APPROVAL.
  - 3) FOR ADDITIONAL REQUIREMENTS, SEE SECTION 8.3.5 OF THE PUBLIC WORKS STANDARDS.

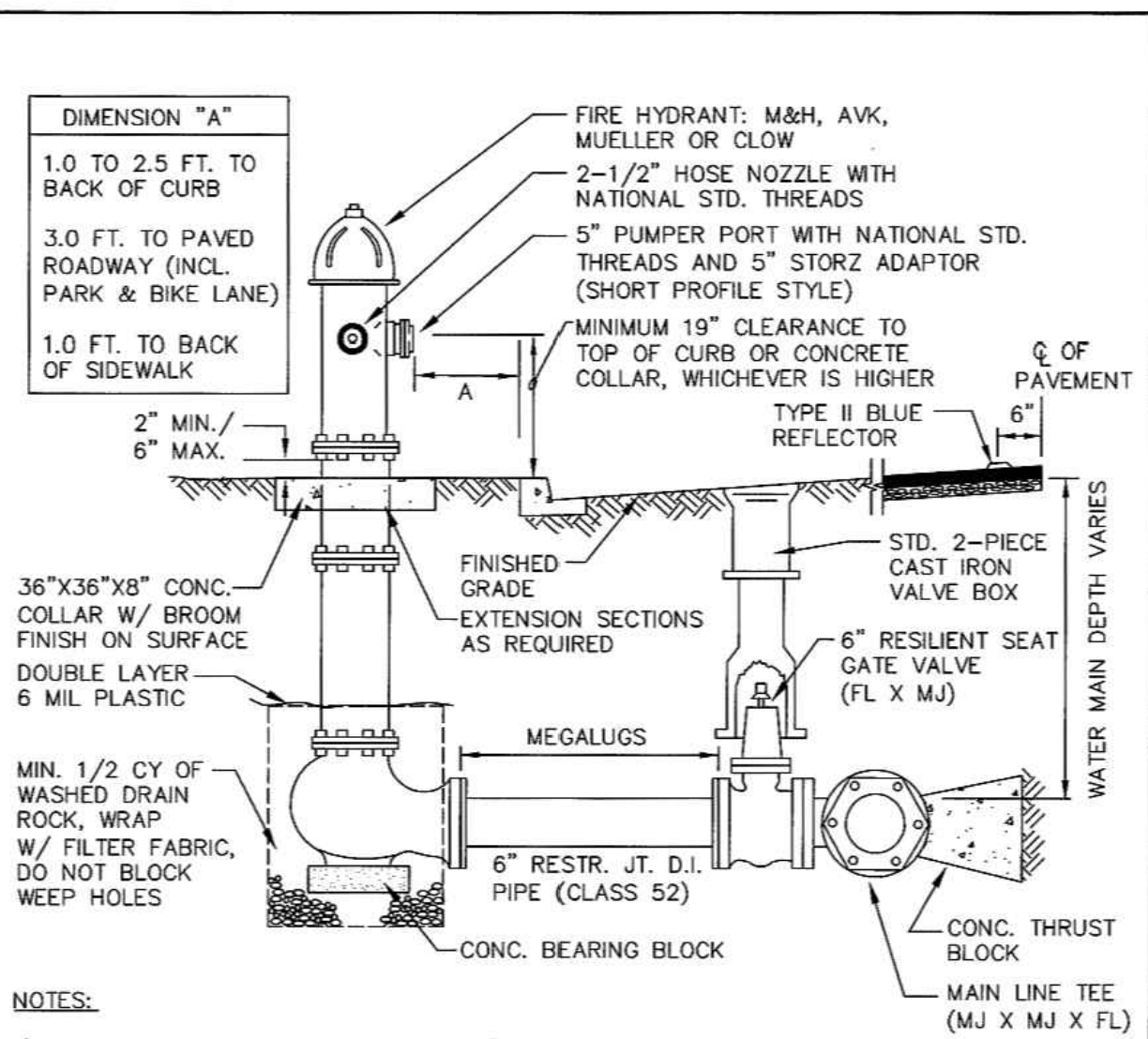
CITY OF DUPONT			
THRUST BLOCKS			
APPROVED:	DATE:	DWG. NO.	
<i>[Signature]</i>	9/21/11	8.3-1	
CITY OF DUPONT	DATE:	DRWN:	CHKD:
	9/11	L.L.	T.N.
		SCALE:	NO SCALE



CITY OF DUPONT			
3/4" & 1" SERVICE CONNECTION			
APPROVED:	DATE:	DWG. NO.	
<i>[Signature]</i>	9/21/11	8.4-1	
CITY OF DUPONT	DATE:	DRWN:	CHKD:
	9/11	L.L.	T.N.
		SCALE:	NO SCALE



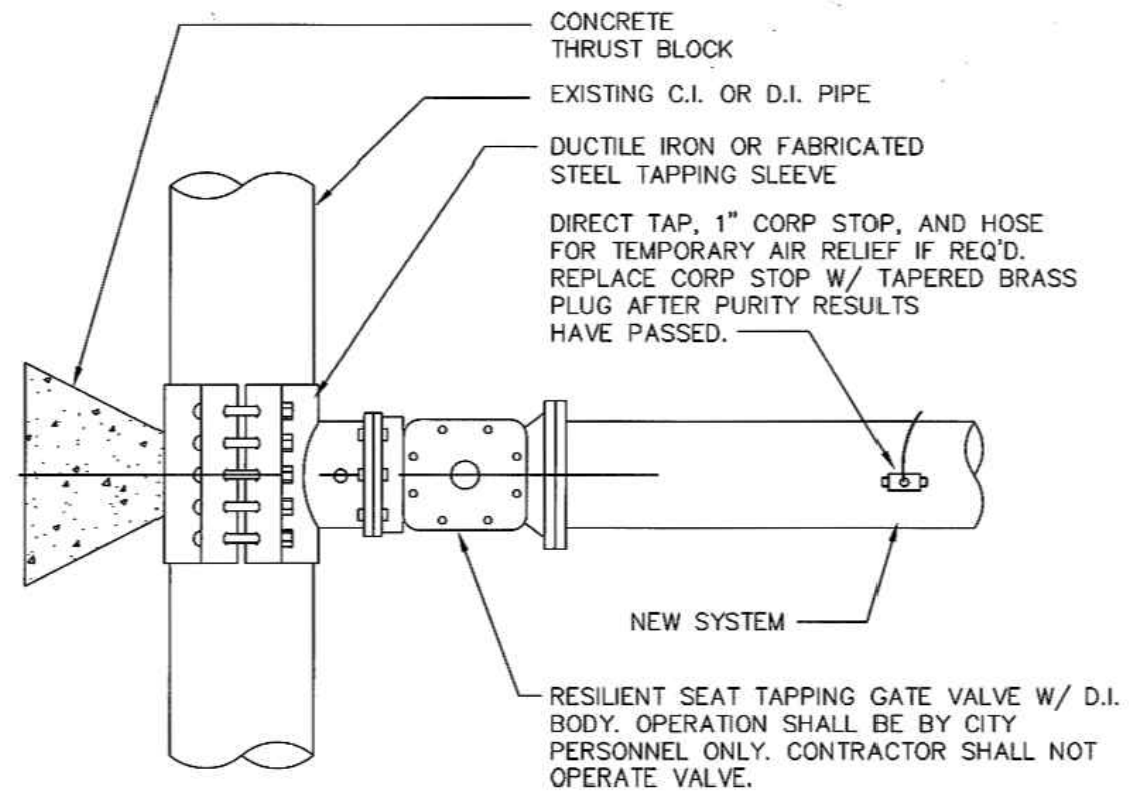
CITY OF DUPONT			
3" & LARGER DOUBLE CHECK VALVE ASSEMBLY			
APPROVED:	DATE:	DWG. NO.	
<i>[Signature]</i>	9/21/11	8.4-8	
CITY OF DUPONT	DATE:	DRWN:	CHKD:
	9/11	P.E.	T.N.
		SCALE:	NO SCALE



NOTES:

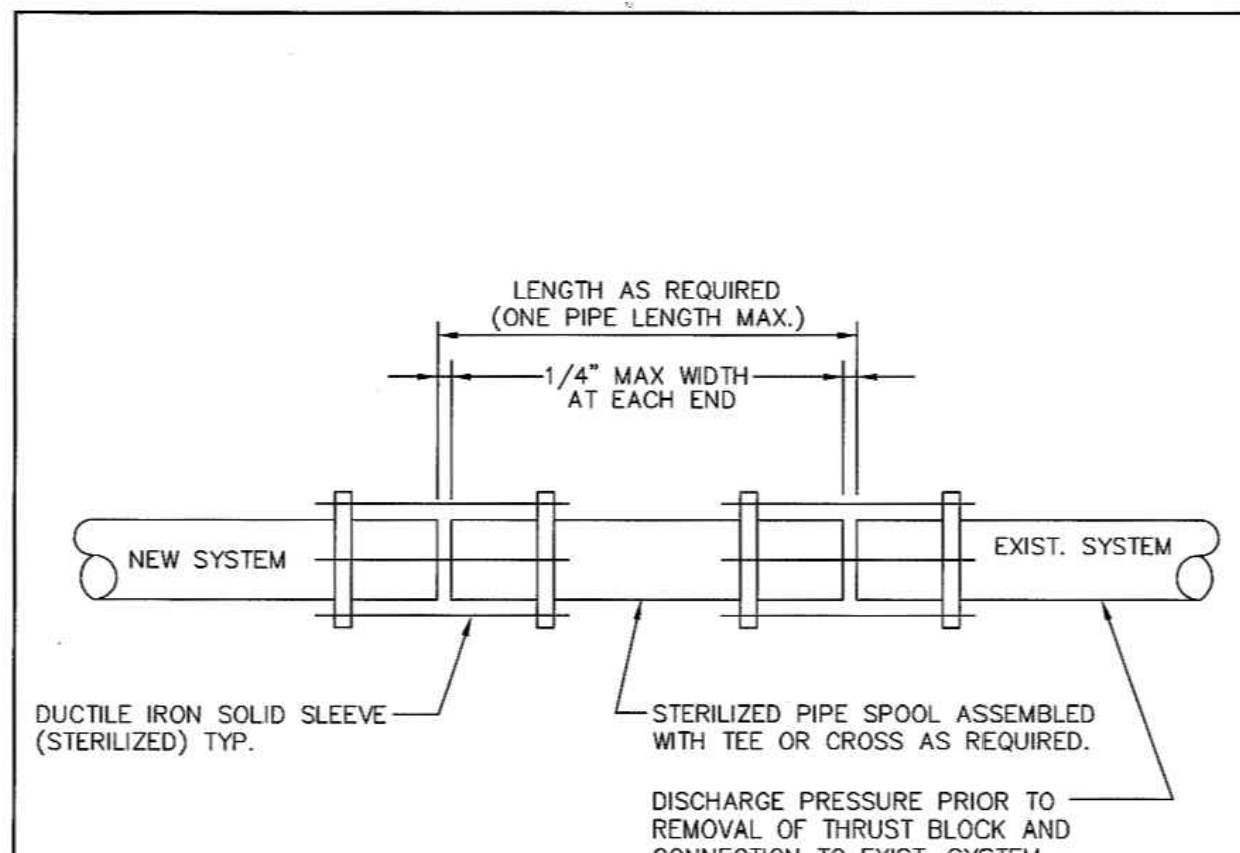
- 1) HYDRANT RUN PIPE SHALL BE MIN. 6" DIA.
- 2) MAXIMUM LENGTH OF 6" DIA. HYDRANT RUNS SHALL BE 50 FT. FOR HYDRANT RUNS GREATER THAN 6" DIA. OR LONGER THAN 50 FT., THE DEVELOPER'S ENGINEER SHALL SUBMIT FLOW CALCS. FOR REVIEW AND APPROVAL BY CITY.
- 3) ALL JOINTS ON HYDRANT RUN SHALL BE RESTRAINED PER CITY STDS.
- 4) INSTALL GUARD POSTS AS REQ. BY CITY.
- 5) PROVIDE MIN. 3 FT. CLR. AND LEVEL AREA AROUND HYDRANT.
- 6) ORIENT PUMPER PORT AS APPROVED BY CITY.
- 7) FOR ADDITIONAL REQUIREMENTS, SEE SECTION 8.6 OF THE PUBLIC WORKS STANDARDS.

CITY OF DUPONT			
FIRE HYDRANT INSTALLATION			
APPROVED:	DATE:	DWG. NO.	
<i>[Signature]</i>	9/21/11	8.6-1	
CITY OF DUPONT	DATE:	DRWN:	CHKD:
	9/11	J.C.	D.J.M.
		SCALE:	NO SCALE



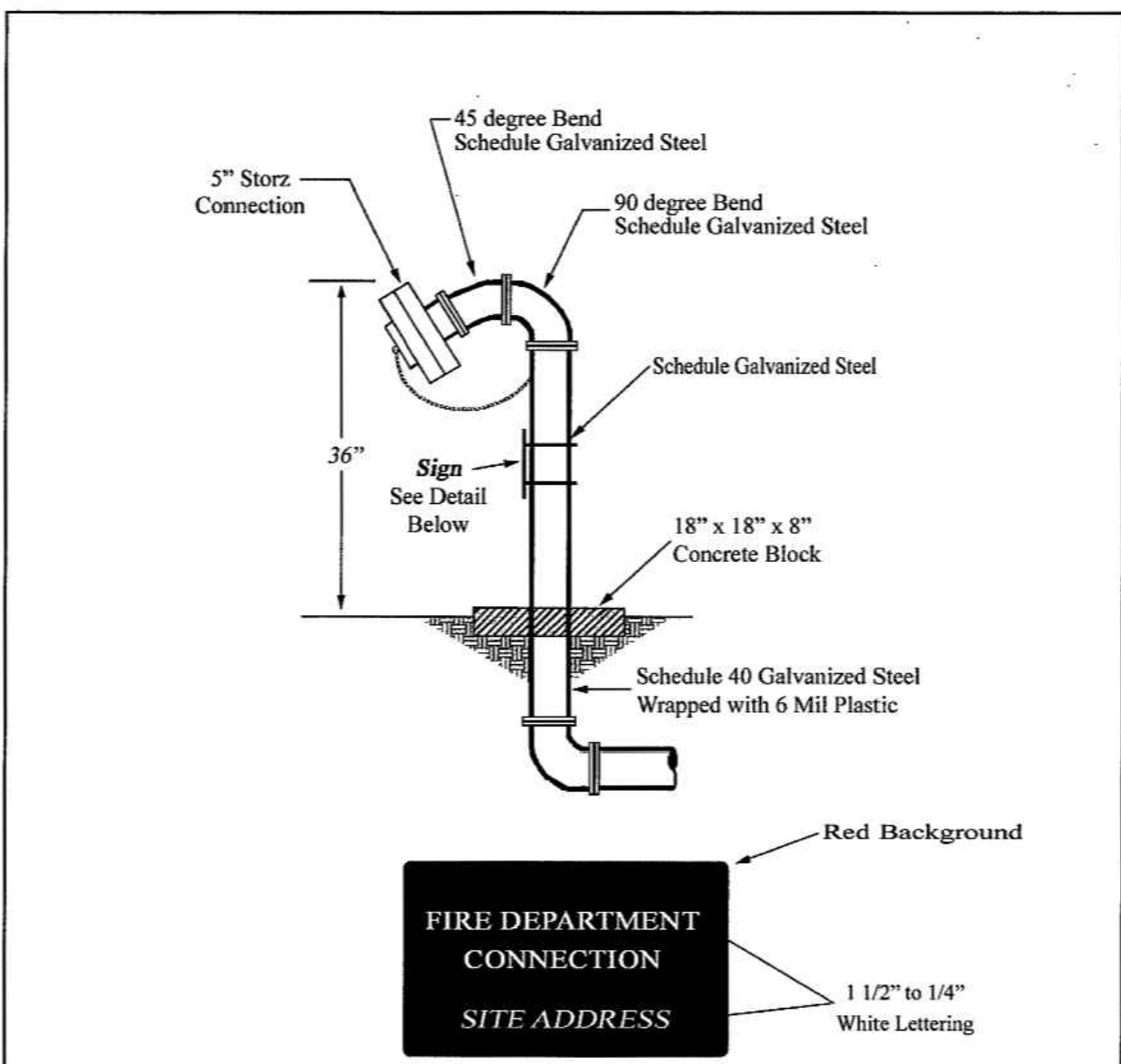
- NOTES:
- 1) SIZE-ON-SIZE TAPPING TEES SHALL BE DUCTILE IRON MECHANICAL SLEEVE.
  - 2) STEEL TAPPING TEES SHALL BE AT LEAST 2" SMALLER IN DIAMETER THAN THE EXISTING WATER MAIN AND SHALL BE EPOXY COATED.
  - 3) TAPPING TEES SHALL BE PRESSURE TESTED TO 200 PSI.
  - 4) PLACE 2" PVC PIPE IN VALVE BOX TO INDICATE USE BY CITY STAFF ONLY.
  - 5) FOR ADDITIONAL REQUIREMENTS, SEE SECTION 8.10 OF THE PUBLIC WORKS STANDARDS.

CITY OF DUPONT			
WET TAP WATER MAIN CONNECTION			
APPROVED:	DATE:	DWG. NO.	
<i>[Signature]</i>	9/21/11	8.10-1	
CITY OF DUPONT	DATE:	DRWN:	CHKD:
	9/11	L.L.	D.J.M.
		SCALE:	NO SCALE



- NOTES:
- 1) NO DEFLECTION SHALL BE ALLOWED AT EITHER COUPLING.
  - 2) IN-LINE VALVE(S) IN EXISTING SYSTEM MAY BE REQUIRED AT THE SOLE DISCRETION OF THE CITY AT ALL NEW INTERIE LOCATIONS. VALVE(S) ARE NOT SHOWN ABOVE FOR CLARITY.
  - 3) FOR ADDITIONAL REQUIREMENTS, SEE SECTION 8.10 OF THE PUBLIC WORKS STANDARDS.

CITY OF DUPONT			
CUT IN WATER MAIN CONNECTION			
APPROVED:	DATE:	DWG. NO.	
<i>[Signature]</i>	9/21/11	8.10-2	
CITY OF DUPONT	DATE:	DRWN:	CHKD:
	9/11	L.L.	D.J.M.
		SCALE:	NO SCALE



CITY OF DUPONT			
FIRE DEPARTMENT CONNECTION			
APPROVED:	DATE:	DWG. NO.	
<i>[Signature]</i>	9/21/11	11.3	
CITY OF DUPONT	DATE:	DRWN:	CHKD:
	9/11	J.C.	D.J.M.
		SCALE:	NO SCALE