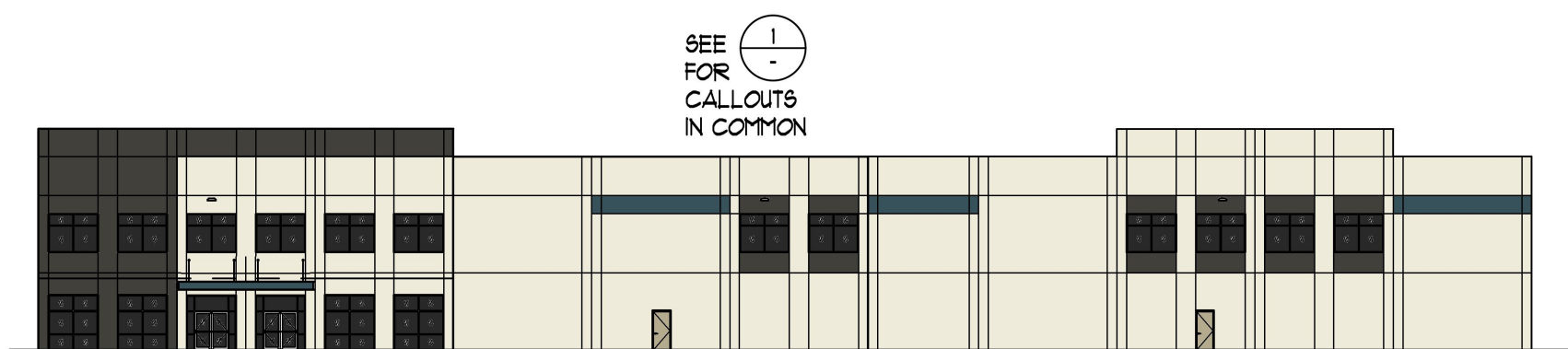


SOUTH ELEVATION

1/32" = 1'-0"

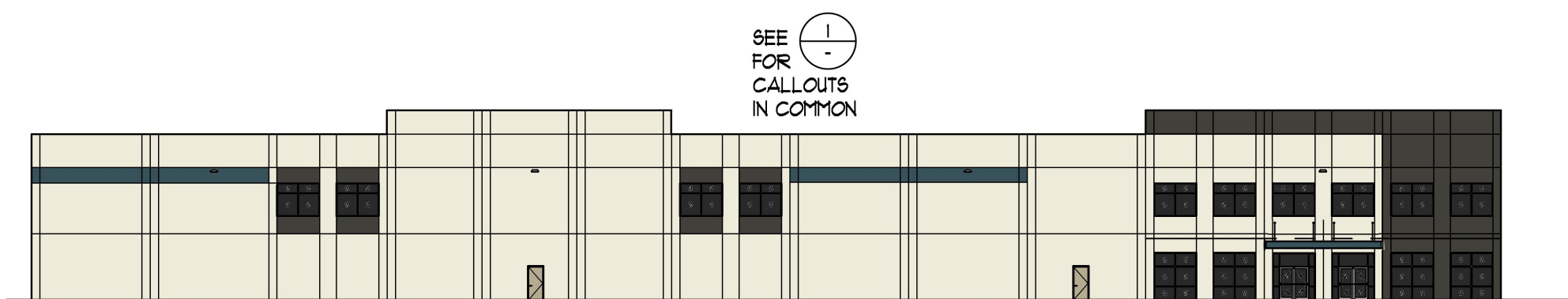
1



EAST ELEVATION

1/32" = 1'-0"

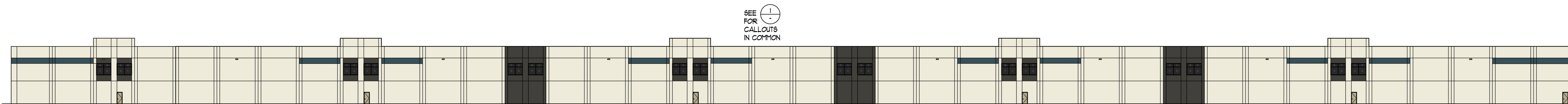
2



WEST ELEVATION

1/32" = 1'-0"

3

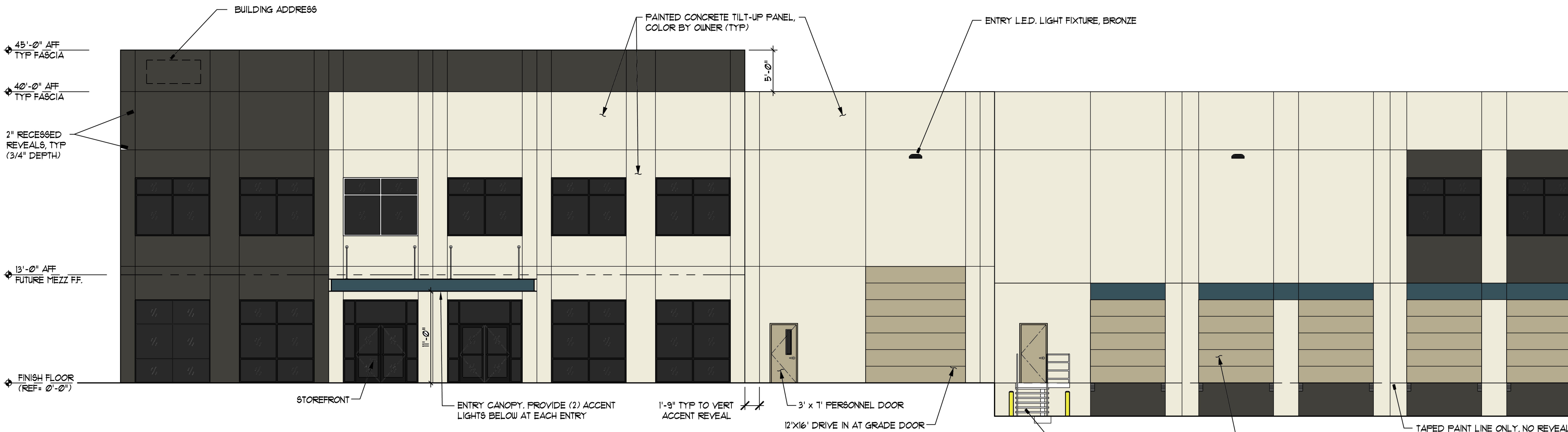


NORTH ELEVATION

1/32" = 1'-0"

4

- EXTERIOR COLOR LEGEND:
- BUILDING BODY COLOR 1
SHERWIN WILLIAMS SW 7632 "MODERN GRAY"
 - BUILDING BODY COLOR 2
SHERWIN WILLIAMS SW1614 "PEPPERCORN"
 - STOREFRONT AND WINDOWS
BLACK
 - DOORS
SHERWIN WILLIAMS SW1635 "FALISADE"
 - CANOPIES
AEP SPAN COOL REGAL BLUE



ENLARGED ELEVATION

1/8" = 1'-0"

5

INNOVA
architects

950 Pacific Avenue, Suite 450
Tacoma, WA 98402
253-572-4903

Project Title:

DuPont 243
1700 Center Drive
DuPont, WA

Client:

AVENUE55

600 University Street, Suite 2305
Seattle, WA 98101
206-707-9696

Job Number:

22-012

Issue Set and Date:

SEPA Permit
November 14, 2022

NOT FOR CONSTRUCTION

REUSE OF DOCUMENTS
THIS DOCUMENT HAS BEEN SHOWN ELECTRONICALLY IN ACCORDANCE WITH WAC 186-23-010 AND CHAPTER 18.54 RCW. UNAUTHORIZED ALTERATION OF ANY OF THE INFORMATION ON THIS DOCUMENT WILL INVALIDATE THE INSTRUMENT OF THE PROFESSIONAL SERVICE. IT IS THE PROPERTY OF INNOVA ARCHITECTS AND IS NOT TO BE USED, IN WHOLE OR IN PART, FOR ANY OTHER PROJECT WITHOUT WRITTEN AUTHORIZATION OF INNOVA ARCHITECTS.

Revisions:

Revisions:

Sheet Title:

Building A
Elevations

Designed by: B. Ludwig, J. Eaves

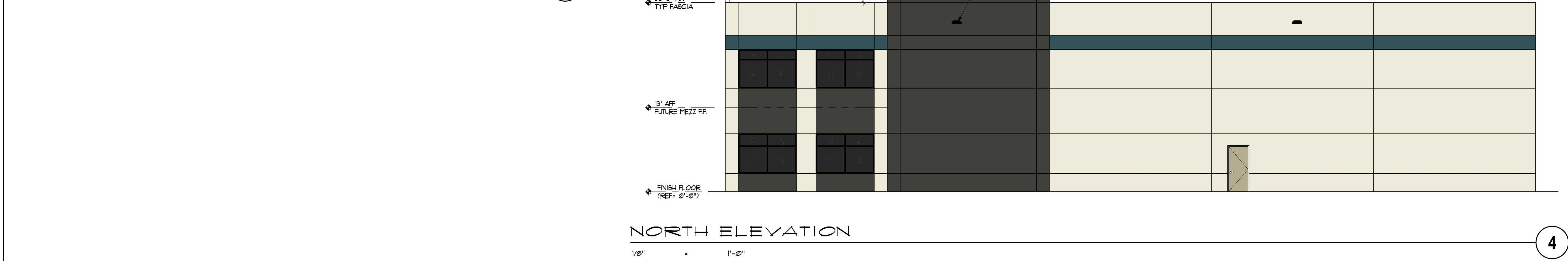
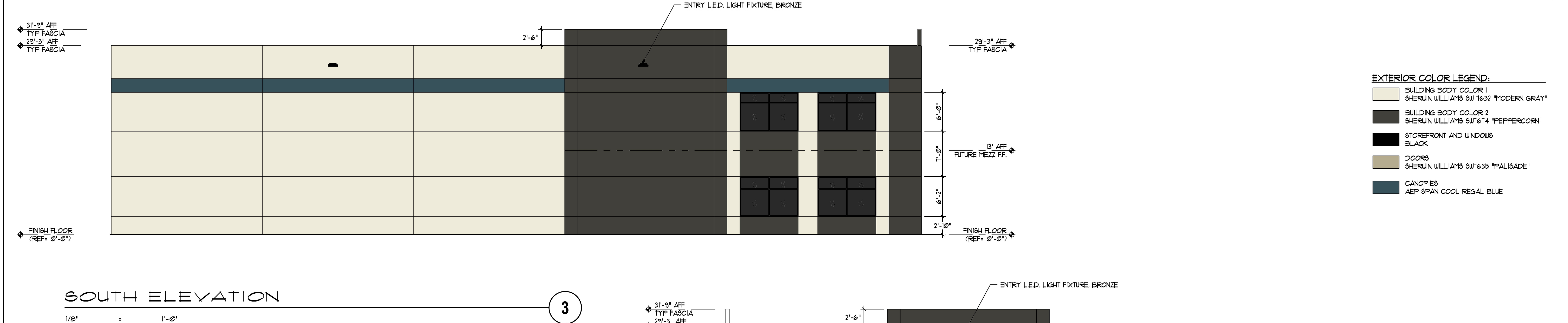
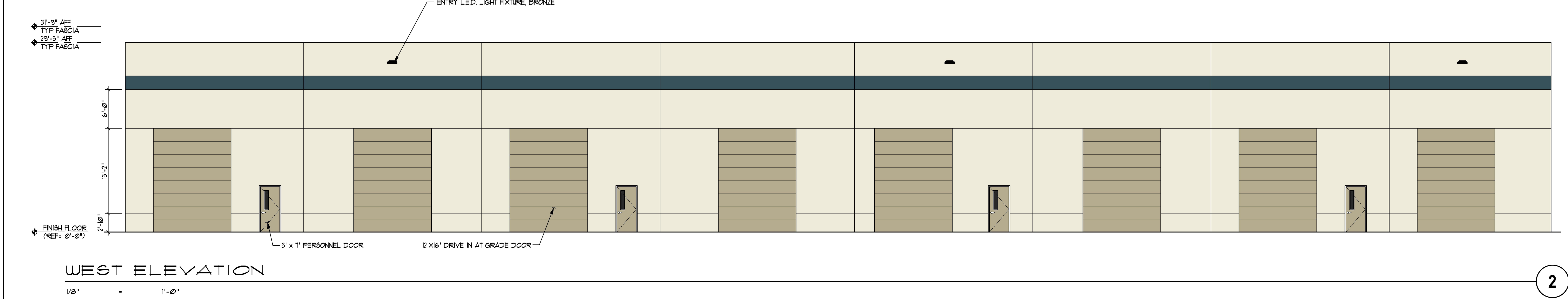
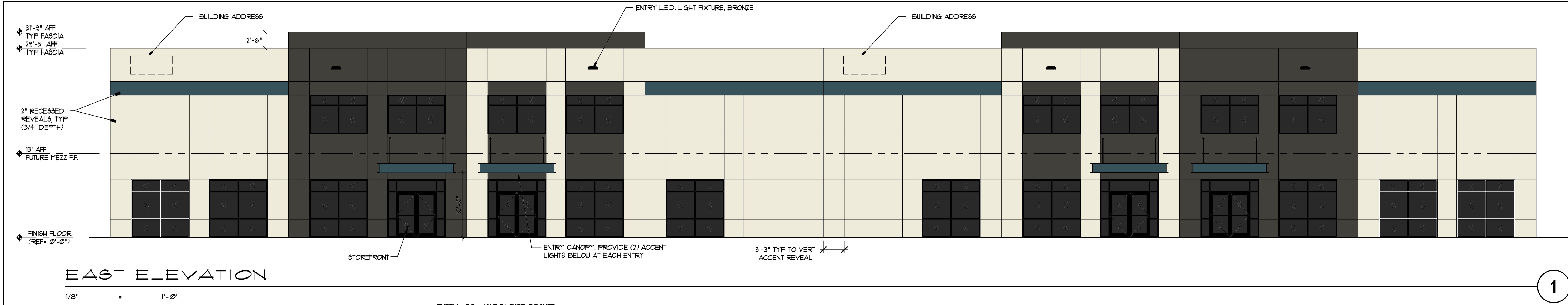
Drawn by: B. Ludwig, J. Eaves

Checked by: P. McCormick

Sheet Number:

A2.0a

of Sheets



EXTERIOR COLOR LEGEND:

	BUILDING BODY COLOR 1 SHERWIN WILLIAMS SW 1632 "MODERN GRAY"
	BUILDING BODY COLOR 2 SHERWIN WILLIAMS SW1614 "PEPPERCORN"
	STOREFRONT AND WINDOWS BLACK
	DOORS SHERWIN WILLIAMS SW1635 "PALISADE"
	CANOPIES AEP SPAN COOL REGAL BLUE

REUSE OF DOCUMENTS
THIS DOCUMENT HAS BEEN BORNED ELECTRONICALLY IN
ACCORDANCE WITH WAC 186-23-010 AND CHAPTER 18.34
RCW. UNAUTHORIZED ALTERATION OF ANY OF THE
INFORMATION ON THIS DOCUMENT WILL INVALIDATE THE
INSTRUMENT OF PROFESSIONAL SERVICE. IT IS THE
PROPERTY OF INNOVA ARCHITECTS AND IS NOT TO BE USED
IN WHOLE OR IN PART FOR ANY OTHER PROJECT WITHOUT
WRITTEN AUTHORIZATION OF INNOVA ARCHITECTS.

Project Title:
DuPont 243
1700 Center Drive
DuPont, WA

Client:

600 University Street, Suite 2305
Seattle, WA 98101
206-707-9696

Job Number:
22-012

Issue Set and Date:
SEPA Permit
November 14, 2022

NOT FOR CONSTRUCTION

Revisions:

△	
△	
△	
△	

Sheet Title:
Building B Elevations
Designed by: B. Ludwig, J. Eaves
Drawn by: B. Ludwig, J. Eaves
Checked by: P. McCormick
Sheet Number:
A2.0b
of Sheets